

HRP

HEPFNER RACING PRODUCTS



NO MATTER WHAT OR WHERE YOU RACE, WE GOT YOU COVERED

TRAILER & SHOP ACCESSORIES

LIFTS & STANDS



hrpracing.com

HEPFNER RACING PRODUCTS

It All Started with the Drive to Build a Better Sprint Car Wing

HEPFNER RACING PRODUCTS

2133 Constitution Ave.
Hartford, WI 53027

HOURS

8:00 am - 5:00 pm CST
Monday - Friday

CONTACT US VIA EMAIL

hrpsales@ghilaser.com

SHOP & ORDER ONLINE

hrpracing.com

Search for Products Online by Part Number

ORDER BY PHONE

HRP: (262) 457-5015

STREETER: (262) 457-5018

PAYMENTS

We Accept Visa, MasterCard, Discover & AmEx

SHIPPING

Our Facility Ships UPS Daily, but Also Offers Customer Pickup by Request



FAMILY OWNED & OPERATED FACILITY, HEPFNER RACING PRODUCTS IS PROUDLY **MADE IN THE USA**

TABLE OF CONTENTS

TRAILER & SHOP ACCESSORIES FOR ALL TYPES OF RACING

Charging Station & Drill/Impact Holders	3	Utility Jugs, Racks, & Accessories	11
Toolbox Drawer Trays & Organization	4	Fuel Funnels, Racks, Hooks, & Accessories	12
Tool Holders & Racks	5 - 6	Wall Mount Workstation & Oil/Aerosol Racks	13
Broom, Handle, Glove, & Wipe Holders	7	Spray Can & Bottle Holders; Tire Racks	14
Roll/Box Towels & Racks	8	Tire Gauges, Nitro Bottle, & Air Tank Holders	15
Ratchet Strap & Floor Jack Holders; Spacer Trays	9	Air Hose/Electrical Reels & Mounts	16
Gear Change Pans, Storage, Shelves, & Cases	10	Trailer & Shop Cabinets	17 - 18

SPRINT CAR, MIDGET, MICRO, MODIFIED, & STOCK CAR SPECIALTY EQUIPMENT

Holders for Bolt-On Components	19	Cabinet/Wall Mount Shock Racks	26
Sprint Car Assembly/Tear Down Cart	20	Squaring Blocks/Arms Set & Moose Blocks	27
Wheel Wrench & Steering Gear Racks; Bead Breakers	21	Increase Your Traction	28
Wheel Balancer; Wheel Cover & Torsion Bar Racks	22	Engine Accessories	29
Wall Mount Axle Racks	23	Engine Stand, Rear End Wrench, & Car Carts	30
Hero Card, Nose Wing, & Torsion Bar Trays	24	Top Wing Wall Trays & Roof Mounts	31
Cabinet/Wall Mount Radius Rod Racks	25	Wicker Bill & Nose Wing Racks; Straps/Bungees	32

STREETER SUPER STANDS: KART RACING, QUARTER MIDGET, WINGED OUTLAWS

Streeter Super Stands & Big Foot Models	33 - 34	Uprights, Reg. Kart Stand, & Stacker Table Top	38
Streeter Super Lift & Accessories/Replacements	35 - 36	Engine, Tire, & Axle Racks	39
Streeter Stackers & Inserts	37	Wheels, Bead Breaker, & Steering Wheels	40

HRP & STREETER MERCHANDISE

Apparel, Hats, Decals, & Hangers	41
----------------------------------	----

HRP MULE CONVERSIONS

HRP Kawasaki Mule Conversions	42
-------------------------------	----

TRAILER & SHOP NECESSITIES

Trailer & Shop Necessities	43 - 45
----------------------------	---------

MOUNTING INFORMATION

Mounting Information	46
----------------------	----

WALL MOUNT CORDLESS CHARGING STATION

HRP Charging Station Holds Drills, Impacts, Flashlights, Charging / Battery Packs, & Other Similar Hand Held Tools

- Cords Pass Through Access Hole for Clean Look & Easy Plug in

● **HRP6126-BLK** \$55.00



CORDLESS DRILL/IMPACT HOLDER

Fits Drills & Impacts

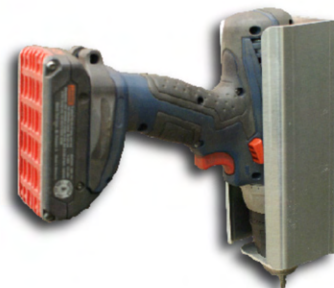
Part No.	Price
○ HRP6395-WHT	\$22.15
● HRP6395-BLK	\$22.15



CORDLESS DRILL HOLDER

Mounts Horizontally or Vertically

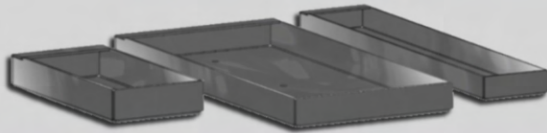
Part No.	Description	Price
○ HRP6396-1-WHT	Standard (2.57" I.D.)	\$32.90
○ HRP6396-WHT	Adjustable Mount (2.12" - 2.92" I.D.)	\$32.90



TOOL & PART TRAYS

Bare Aluminum

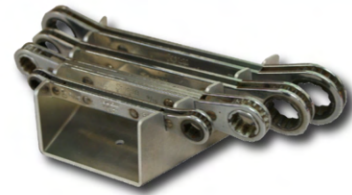
Length	2.0" Wide	2.5" Wide	3.0" Wide	3.5" Wide	4.0" Wide	6.0" Wide	Price
4.0"	● HRP6152A	● HRP6153A	● HRP6154A	● HRP6155A	● HRP6156A	-	\$6.40
6.0"	● HRP6152B	● HRP6153B	● HRP6154B	● HRP6155B	● HRP6156B	● HRP6157B	\$7.10
8.0"	● HRP6152C	● HRP6153C	● HRP6154C	● HRP6155C	● HRP6156C	-	\$7.70
10.0"	● HRP6152D	● HRP6153D	● HRP6154D	● HRP6155D	● HRP6156D	-	\$8.30
12.0"	● HRP6152E	● HRP6153E	● HRP6154E	● HRP6155E	● HRP6156E	-	\$8.95



WRENCH RACKS

Bare Aluminum

Part No.	Spots	Fits	Price
Combination Wrenches			
● HRP6122-F	8	5/16" - 3/4"	\$24.00
● HRP6123-B	4	5/16" - 3/4"	\$24.00
Open End / Ratchet Box End Wrenches			
● HRP6120-F	13	1/4" - 1"	\$24.00
● HRP6121-B	9	1/4" - 3/4"	\$24.00
● HRP6121-F	9	1/4" - 3/4"	\$24.00

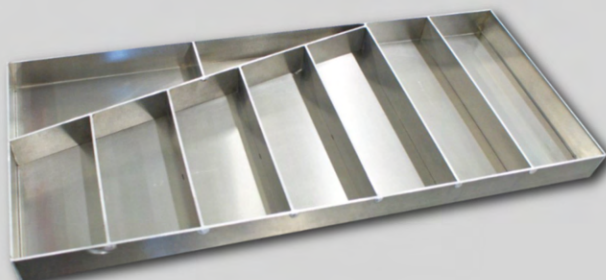


FULL WRENCH TRAY

25.00" x 11.00" x 1.25"

- 9 Compartments
- Bare Aluminum

● **HRP6115-7** \$286.00



TAPE MEASURE RACKS

Mounts to Toolbox Drawer
- Bare Aluminum

Part No.	Description	Price
● HRP6161A	Medium, 3.360" Long	\$7.70
● HRP6161B	Large, 4.360" Long	\$7.70



HEAVY DUTY SHOP CART

Perfect for Your Shop!

- Thick, Heavy Duty Metal for Durability
- Powder Coated Red
- Breaks Down for Shipping, (Assembly Required)

Main Standard Cart Includes:

- 2 Lower Shelves & Necessary Corner Posts
- Rigid & Swivel Casters for Easy Mobility
- Handle for Pushing & Pulling

Add-On Upper Level Includes:

- 1 Upper Shelf
- 4 Add-On Corner Posts



Main Standard Cart

With Add-On Upper Level

Part No.	Description	Price
● HRP6030	Main Standard Cart	\$540.00
● HRP6030-UPPER	Add-On Upper Level	\$265.00

GREASE GUN HOLDER

Aluminum

○ HRP6298 \$21.05



WALL MOUNT GRINDER RACK

Aluminum

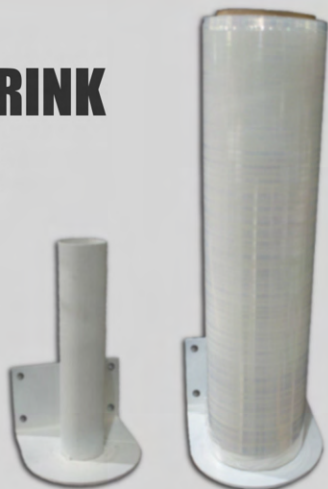
Part No.	Size	Price
○ HRP6068A-WHT	9"	\$19.90
○ HRP6068B-WHT	7"	\$18.75
○ HRP6068C-WHT	5"	\$17.65



STANDARD SHRINK WRAP HOLDER

11"
- Aluminum

○ HRP6065A-WHT \$42.00



MINI SHRINK WRAP HOLDER

Aluminum

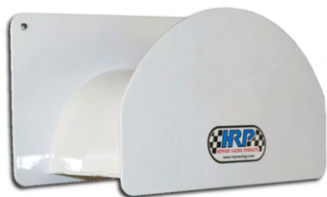
○ HRP6065B-WHT \$17.65



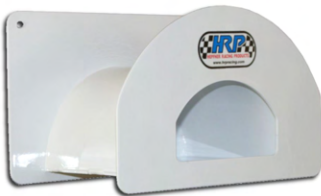
AIR HOSE HANGERS

10.0" Long x 5.7" Wide x 6.0" Tall
- Aluminum

Finish	Air Hose Hanger	Air Hose Hanger w/ Cubby
White	○ HRP6280-WHT \$40.85	○ HRP6281-WHT \$49.10
Black	● HRP6280-BLK \$43.70	● HRP6281-BLK \$55.75



Without Storage Cubby



With Storage Cubby

ELECTRICAL CORD RACK

5.5" Long x 4.2" Wide x 5.0" Tall
- Steel

Part No.	Price
○ HRP6275-WHT	\$30.80
● HRP6275-BLK	\$32.35



PACKING TAPE HOLDER

Aluminum

○ HRP6165-WHT \$22.50



DUCT TAPE HOLDER

Aluminum

Part No.	Price
○ HRP6390-WHT	\$26.70
● HRP6390-BLK	\$26.70



FLASHLIGHT HOLDER

Aluminum

Part No.	Price
○ HRP6299-WHT	\$40.85
● HRP6299-BLK	\$42.60



ZIP TIE HOLDER

12.9" Long x 14.2" Tall
- 5 Spots to Hold a Large Assortment of Zip/Cable Ties
- Aluminum

Part No.	Price
○ HRP6085-WHT	\$70.95
● HRP6085-BLK	\$70.95



BROOM HOLDERS



Finish	Large Push Broom Holder	Small Broom Holder - Flat	Small Broom Holder - Angled
White	○ HRP6392-WHT \$14.25	○ HRP6393-WHT \$12.50	○ HRP6389-WHT \$16.70
Black	● HRP6392-BLK \$17.05	● HRP6393-BLK \$16.15	-



SHOVEL/HANDLE HOLDER

Keep your Handheld Items Against the Wall & Out of the Way!
- Aluminum

○ **HRP6391-WHT** \$11.95



HEAVY DUTY UTILITY HOOK

Keep your Handheld Items Against the Wall & Out of the Way!
- 3.75" Long x 4.32" Tall
- Stainless Steel

● **HRP6394** \$18.75



DISPOSABLE GLOVE HOLDER

See Disposable Gloves on Page #45
- Aluminum

○ **HRP6185-WHT** \$39.15



WET WIPE HOLDER

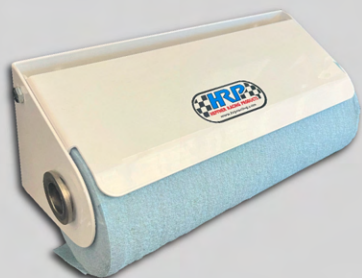
Keep Your Hands Clean & Space Organized!
- WABAM Wipes on Page #45
- Aluminum

○ **HRP6197-WHT** \$18.50

NEW PRODUCT



STANDARD SIZE TOWELS



ROLL TOWEL RACK

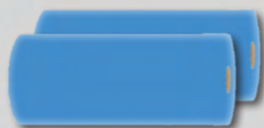
Part No.	Price
<input type="radio"/> HRP6430-WHT	\$48.25
<input checked="" type="radio"/> HRP6430-BLK	\$50.50



TOWEL & AEROSOL STORAGE RACK

Double Level Storage

HRP6470-WHT \$112.30



SHOP ROLL TOWELS

- Assorted Sheet Count
- Sold Each

HRP6191 \$4.55

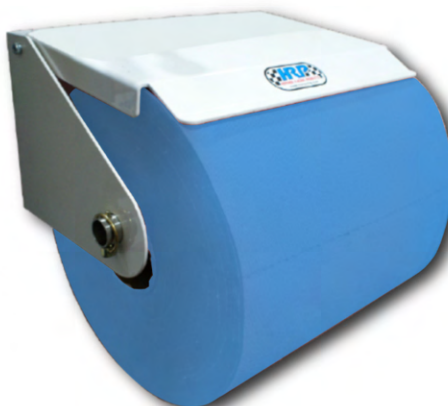
JUMBO SIZE TOWELS



JUMBO ROLL TOWELS

Brand & Towel May Vary

HRP6196 \$50.50



JUMBO ROLL TOWEL RACK

Holds Rolls Up to 13" Wide & 16" Deep

Part No.	Price
<input type="radio"/> HRP6431-WHT	\$82.25
<input checked="" type="radio"/> HRP6431-BLK	\$89.25

BOX TOWELS



SHOP TOWEL BOX

- 200 Count Heavy Duty Towels
- Brand & Color May Vary

HRP6192 \$15.99



TOWEL BOX RACK

Part No.	Price
<input type="radio"/> HRP6193-WHT	\$47.10
<input checked="" type="radio"/> HRP6193-BLK	\$49.70

RATCHET STRAP HANGERS

Keep your Ratchet Straps & Tie-Downs Organized!

Part No.	Price
8" Wide	
○ HRP6007-WHT	\$35.75
● HRP6007-BLK	\$41.45
18" Wide	
○ HRP6005-WHT	\$55.00
● HRP6005-BLK	\$46.50



RATCHET STRAP RACK

Large Handle Style
- 11" x 11"

○ HRP6006-WHT \$39.15



FLOOR JACK WALL MOUNT CRADLE

Accepts up to 11" Wide Jack Base
- 16" x 27"

Part No.	Price
○ HRP6289-WHT	\$130.45
● HRP6289-BLK	\$141.75



WHEEL SPACER TRAYS

Organize your Spacers!

- Tire Spacers, Specialty Parts & Tools
- Aluminum

Part No.	Price
23" Wall Mount Spacer Tray	
○ HRP6181-WHT	\$52.80
● HRP6181-BLK	\$59.60
30" Drawer/Wall Mount Spacer Tray	
○ HRP6180-WHT	\$38.05

HRP6180-WHT



HRP6181-BLK



HRP6181-WHT

ALUMINUM GEAR CHANGE OIL PANS

Take the Slop & Fuss Out of Changing Gears

- Keeps Gear Oil Flowing Below
- Separates Gears & Fasteners Above

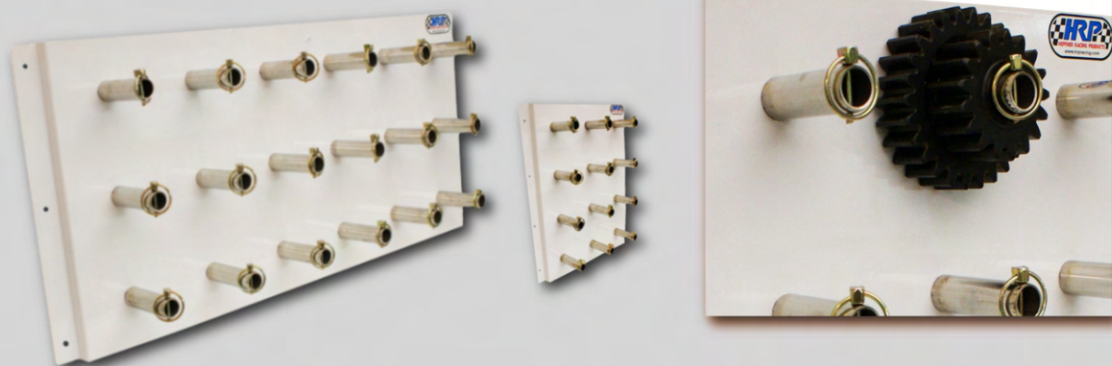
Part No.	Price
○ HRP6220-WHT	\$64.65
● HRP6220-BLK	\$64.65
● HRP6220	\$56.70



WALL MOUNT GEAR PANELS

Includes Clips to Hold Gears in Place

Part No.	Spots	Price
○ HRP6515-36	36	\$459.30
○ HRP6515-18	18	\$323.20
○ HRP6515-12	12	\$294.85



GEAR CASES/TOTES & SHELVES

Keep Quick Change Gears Clean, Organized, & Secure

- Shelves Made to fit Gear Cases/Totes Listed

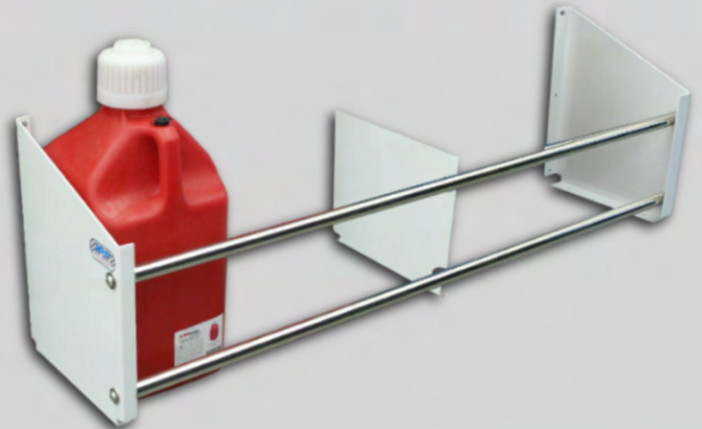
Part No.	Price
Single Row Gear Case Shelf	
○ HRP6518-WHT	\$44.00
● HRP6518-BLK	\$56.20
Gear Case / Totes	
○ ALL14350	\$6.99
● ALL14351	\$6.99



FLOOR MOUNT JUG RACKS

- White Powder Coated Aluminum End, Center, & Base Plates
- Stainless Steel Rods
- Holds 5 Gallon Sized Jugs

Part No.	Spots	Price
<input type="radio"/> HRP6360-WHT	2	\$154.85
<input type="radio"/> HRP6361-WHT	4	\$176.40
<input type="radio"/> HRP6362-WHT	6	\$201.90



TWO LEVEL JUG RACKS

- White Powder Coated Aluminum End, Center, & Base Plates
- Stainless Steel Rods
- Holds 5 Gallon Sized Jugs

Part No.	Spots	Price
<input type="radio"/> HRP6359-4-WHT	4	\$300.55
<input checked="" type="radio"/> HRP6359-4-BLK	4	\$314.25
<input type="radio"/> HRP6359-6-WHT	6	\$340.20
<input checked="" type="radio"/> HRP6359-6-BLK	6	\$355.05
<input type="radio"/> HRP6359-8-WHT	8	\$374.25
<input checked="" type="radio"/> HRP6359-8-BLK	8	\$390.30



2.5 GALLON JUG RACK

- Wall Mount**
- Holds (2) 2.5 Gallon Jugs
 - Aluminum

HRP6358 \$150.30



UTILITY JUGS

Manufacture or Style May Vary

Part No.	Size	Price
<input type="radio"/> HRP6364	5 Gallons	\$34.60
<input checked="" type="radio"/> HRP6364-BLK	5 Gallons	\$32.00
<input checked="" type="radio"/> HRP6364-RED	5 Gallons	\$34.60
<input type="radio"/> HRP6363	2.5 Gallons	\$29.50



FUEL FUNNEL RACKS

Part No.	Description	Price
○ HRP6260-WHT	Triangle Rack	\$60.15
● HRP6260-BLK	Triangle Rack	\$69.20
○ HRP6261-WHT	D Rack	\$60.15
● HRP6260-BLK	D Rack	\$70.35



FUEL FUNNEL HOOKS

Fits Triangle Style Funnels

Part No.	Price
○ HRP6262-WHT	\$24.45
● HRP6262-BLK	\$24.45
● HRP6262	\$19.90



FUEL FUNNELS

Part No.	Description	Price
● BEH-366-55001406	Triangle Funnel	\$18.99
● SCR6110R	D Funnel	\$18.99



UTILITY JUG ACCESSORIES

HOSE BENDER

WPS-30-1200 \$5.25



SCREW IN HOSE

Fits 2.5 or 5 Gallon

HRP6365 \$9.10



FUEL FUNNEL FILTER

Use With BEH-366-55001406

BEH-366-5000001 \$21.95

WALL MOUNT WORKSTATION

- 23" x 23"
- Built In Roll Towel Dispenser
 - An Inside Shelf for Optimum Storage
 - Door Locks in a Closed Position for Travel
 - A Sturdy, Easy to Clean Surface

Part No.	Price
○ HRP641-WHT	\$275.00
● HRP641-BLK	\$265.00



WALL MOUNT LUBRICANT BOTTLE & AEROSOL TRAYS

Part No.	Size	Dimensions	Price
○ HRP6473-WHT	Large	31.88" x 22.75" x 8.62"	\$275.00
○ HRP6471-WHT	Medium	17.94" x 17.75" x 5.12"	\$118.55
○ HRP6472-WHT	Small	17.94" x 17.75" x 5.12"	\$106.10



OIL BOTTLE & AEROSOL CAN TRAYS

Description	White Finish		Black Finish	
	Part No.	Price	Part No.	Price
16" Long				
2.75" Wide, Alum.	○ HRP6302-WHT	\$36.45	● HRP6302-BLK	\$37.85
3.25" Wide, Alum.	○ HRP6300-WHT	\$34.05	● HRP6300-BLK	\$37.85
4.50" Wide, Alum.	○ HRP6301-WHT	\$40.30	● HRP6301-BLK	\$40.50
4.50" Wide, Steel	○ HRP6301S-WHT	\$39.70	-	-
32" Long				
2.75" Wide, Alum.	○ HRP6304-WHT	\$43.70	● HRP6304-BLK	\$47.00
3.25" Wide, Alum.	○ HRP6305-WHT	\$45.40	● HRP6305-BLK	\$48.65
4.50" Wide, Alum.	○ HRP6306-WHT	\$48.80	● HRP6306-BLK	\$51.85



32" Long



16" Long

SPRAY CAN & BOTTLE HOLDERS

Aluminum

Part No.	Description	Price
<input type="radio"/> HRP6092-1-3750-WHT	Spray Bottle, 1 Spot	\$21.05
<input type="radio"/> HRP6092-1-WHT	Spray Can, 1 Spot	\$21.05
<input type="radio"/> HRP6092-4-WHT	Spray Can, 4 Spot	\$34.65
<input type="radio"/> HRP6092-6-WHT	Spray Can, 6 Spot	\$41.45



TIRE RACK

Adjustable From 12" Dia. to 40" Dia.

- Holds Most Styles of Racing Tires / Wheels: Sprint Car, Midget, Late Model, Modified, Road Race, Stock Car, Drag Race, Etc.
- Folds Up & Locks in Closed Position
- 28.12" Tall

Part No.	Length	Price
● HRP6600-48	48" (51.5" Overall)	\$430.95
● HRP6600-545	54.5" (58" Overall)	\$680.40
● HRP6600-64	64" (67.5" Overall)	\$521.65
● HRP6600-755	75.5" (79" Overall)	\$839.20
● HRP6600-96	96" (99.5" Overall)	\$765.45
● HRP6600-C	Custom Length	Call

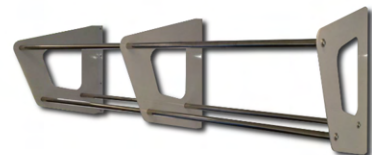
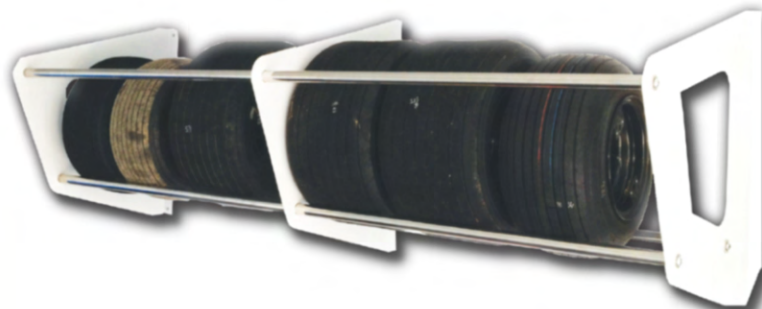
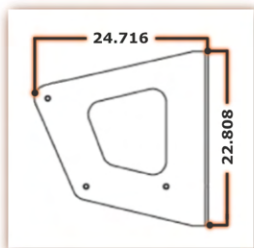


TIRE RACK FOR SMALL TIRES

Micro Sprints, Junior Sprints, ATV/UTV

- Holds Up to 24" Circumference Wheels
- 20"+ Tall Mounting Plates

Part No.	Length	Price
<input type="radio"/> HRP6336-48	48"	\$235.90
<input type="radio"/> HRP6336-64	64"	\$247.25
<input type="radio"/> HRP6336-80	80"	\$300.55



LONGACRE TIRE GAUGES



Shop the Entire Selection Online
- Prices Subject to Change

Part No.	Description	PSI	Length	Price
52-53053	3.5" Digital	0-100 psi	17" Long	\$545.00
52-53010	2.5" Digital	0-25 psi	17" Long	\$178.00
52-53006	2.0" Digital	0-60 psi	14" Long	\$60.00



TIRE GAUGE HOLDERS

Aluminum

Part No.	Style	Fits	I.D.	Price
<input type="radio"/> HRP6383-WHT	Large	3.5" Gauges	4.00"	\$26.10
<input type="radio"/> HRP6380-WHT	Small	2.5" Gauges	3.50"	\$25.55
<input type="radio"/> HRP6378-WHT	Mini	2.0" Gauges	2.75"	\$25.55
<input type="radio"/> HRP6382-WHT	Square	Intercomp Gauges	-	\$25.00



Large, Small, & Mini Style



Square Intercomp Gauge Style

NITRO BOTTLE HOLDERS

NEW Style Coming Soon!

BOLT ON STYLE - 9"

Sold as a Set (2)

- HRP6370-1 \$93.60



SET IN STYLE - 7"

Part No.	Price
<input type="radio"/> HRP6059-WHT	\$68.05
<input checked="" type="radio"/> HRP6059-BLK	\$85.05



AIR TANK RACK

20.5" Wide x 9.5" Deep

- Fits Both HRP6373 & STR-2800-510
- Rubber Protected Saddle Edges

Part No.	Description	Price
<input type="radio"/> HRP6370-1	Air Tank Rack	\$93.60
<input type="radio"/> HRP6373	5 Gallon Aluminum Air Tank	\$124.75
<input type="radio"/> STR-2800-510	5 Gallon Steel Air Tank	\$64.20



AIR HOSE REELS

Call or Visit hrpracing.com for Pricing

Part No.	Description	Length	I.D.
HRP6285	Composite Hose Reel	50' Long	1/4
HRP6286	Economy Hose Reel	50' Long	3/8
HRP6287	Air Hose & Reel	35' Long	3/8

HRP6287



HRP6285



HRP6286



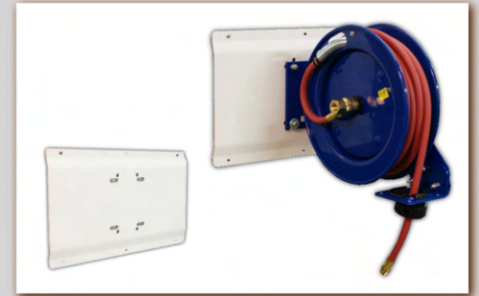
AIR HOSE REEL MOUNTING BRACKETS

Aluminum

Part No.	Description	Price
<input type="radio"/> HRP6293	Universal Bracket	\$52.20
<input type="radio"/> HRP6293-1	Wall Mount Bracket	\$48.25



HRP6293



HRP6293-1

HOSE REEL COVER

17.5" x 20.0" x 9.0"

HRP6296 \$119.10



ELECTRICAL CORD REEL

With 3 Outlet Strip

HRP6284 \$73.75



ELECTRICAL CORD REEL MOUNTING BRACKETS

Aluminum

Part No.	Description	Price
<input type="radio"/> HRP6290	Hanging Style Narrow	\$21.05
<input type="radio"/> HRP6291	Hanging Style Wide	\$26.15



HRP6290



HRP6291

OVERHEAD CABINETS

15.411" Tall x 13.500" Wide
- 1" Flip Up Door

Part No.	Length	Price
Single Door		
○ HRP6509-24-WHT	24"	\$225.70
○ HRP6509-32-WHT	32"	\$232.50
● HRP6509-32-BLK	32"	\$255.00
○ HRP6509-36-WHT	36"	\$238.15
Double Door		
○ HRP6509-48-WHT	48"	\$339.10
○ HRP6509-60-WHT	60"	\$361.25



Single Door Cabinet

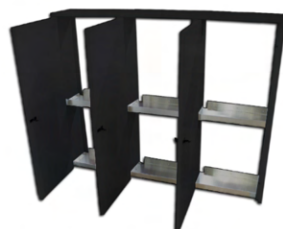


Double Door Cabinet

JUG STORAGE WALL CABINET

66" Long x 54" Tall x 12" Deep
- .090" Aluminum
- Stores up to 12 Fuel Jugs
- See Fuel Jugs on Page #11

Part No.	Price
○ HRP6510-WHT	\$1,530.90
● HRP6510-BLK	\$1,644.30



REAR END / AXLE RACK WALL CABINET

72" x 70"
- Sprint Car & Midgets
- Dimensions Allow Rear Axle Assembly & Front Axle Assembly Storage
- .090" Aluminum
- Use with HRP Axle Racks: See on Page #23

○ HRP6511-WHT \$1,417.50



WALL CABINETS

- Aluminum
- Durable & Cleans Easily

Part No.	Length x Width x Height	Price
Single Door		
○ HRP6500-WHT	22.5" x 5.0" x 46.0"	\$357.25
○ HRP6502-WHT	22.5" x 7.0" x 46.0"	\$357.25
○ HRP6501-WHT	22.5" x 5.0" x 58.0"	\$413.95
○ HRP6503-WHT	22.5" x 7.0" x 58.0"	\$413.95
○ HRP6505-WHT	30.0" x 7.0" x 58.0"	\$459.30
○ HRP6506-WHT	30.0" x 9.0" x 58.0"	\$519.40
Double Door		
○ HRP6512-WHT	54.0" x 12.0" x 48.0"	\$1,247.40



GEAR CASE CABINET SHELF INSERTS

- Made to Fit In Conjunction with Single Door Cabinets Above
 - .080" Aluminum

Part No.	Description	Length x Width x Height	Price
22.5" Wall Cabinet Inserts			
● HRP6520-SHORT	Short - Holds Up to 18 Cases	20.00" x 5.50" x 32.00"	\$340.20
● HRP6520-TALL	Tall - Holds Up to 30 Cases	20.00" x 5.50" x 55.25"	\$396.95
30.0" Wall Cabinet Inserts			
● HRP6519-SHORT	Short - Holds Up to 24 Cases	25.25" x 5.50" x 32.00"	\$340.20
● HRP6519-TALL	Tall - Holds Up to 42 Cases	25.25" x 5.50" x 55.25"	\$413.95



WALL MOUNT FOLDING WORKBENCH

- 48"
 - Black Anodized Aluminum
 - Use Inside or Outside of Trailer
 - Folds Down When Not in Use

- HRP6190 \$510.30



REPLACEMENT CABINET LATCHES

Part No.	Grip Range	Price
HRP6820	.910" - 1.81"	\$19.30
HRP6821	.040" - .085"	\$21.55



DRIVELINE RACK

Torque Tube & Ball Housing Assemblies

- A Serrated Bottom, Holding Everything Into Place
- Rubber Grommets & Exclusive Rubber "U" Channels

Part No.	Price
○ HRP6330-WHT	\$167.85
● HRP6330-BLK	\$175.80



NURF & BUMPER RACK

Safely Store & Secure your Nurfs & Bumpers With the Help of HRP's Exclusive Rubber "U" Channels

Part No.	Price
○ HRP6135-WHT	\$136.10
● HRP6135-BLK	\$147.45



ADJUSTABLE RADIATOR MOUNT

Fully Adjustable for Both Height & Width:

- Height: Up to 29.00" Tall
- Width: 2.25" - 3.50"

Part No.	Price
○ HRP6340A-WHT	\$115.80
● HRP6340A-BLK	\$130.10



FUEL STICK HOLDER

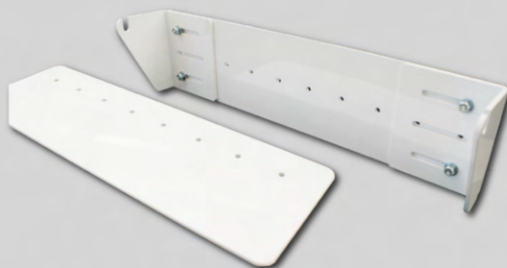
Part No.	Price
○ HRP6265-WHT	\$45.40
● HRP6265-BLK	\$54.45



ADJUSTABLE FUEL TANK WALL MOUNT BRACKETS

- Fits All Popular Styles of Sprint Car Tail Tanks, Including ATL
- Reverse the Side Plates to Fit Midget & Lightning Sprints Tanks
- Lower Plate can Protect the Trailer / Shop Wall & the Bottom of the Fuel Cell

Part No.	Price
○ HRP6783-WHT	\$108.90
● HRP6783-BLK	\$119.10

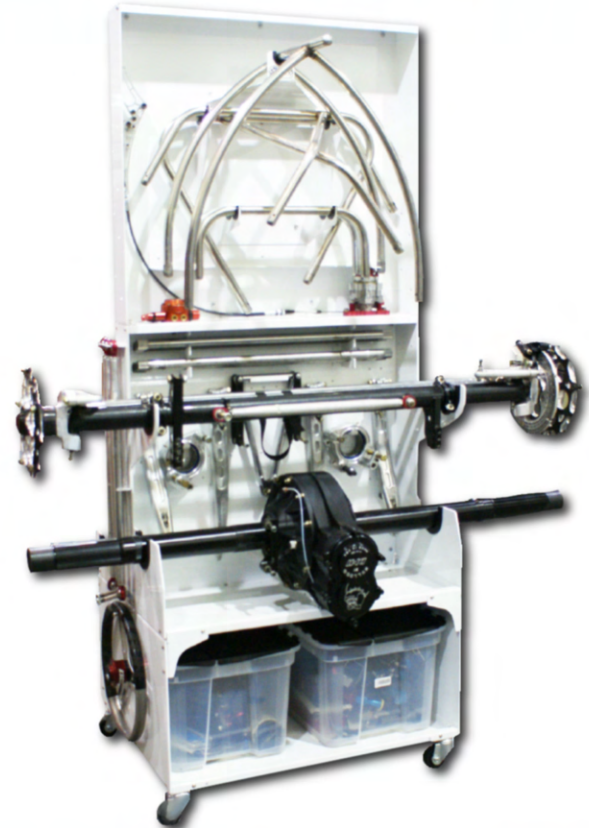
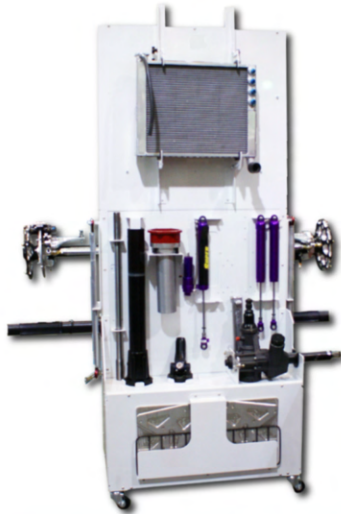


THE ULTIMATE SOLUTION FOR SHOP STORAGE

SPRINT CAR ASSEMBLY / TEAR DOWN CART

- Shown With Both the Upper & Lower Unit
- Parts & Bins are NOT Included

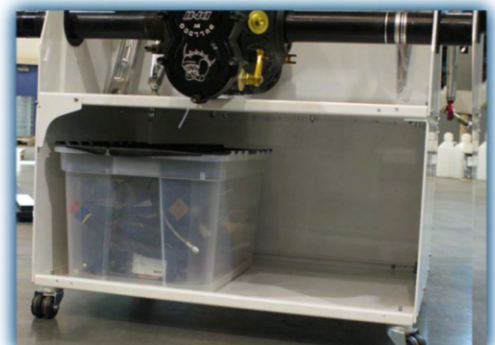
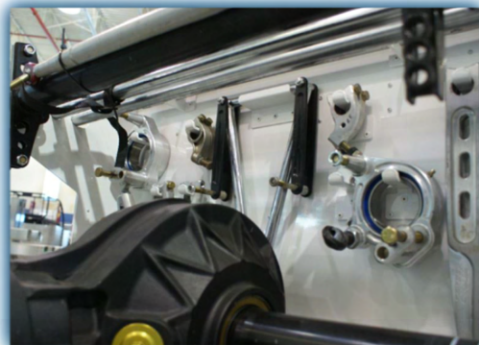
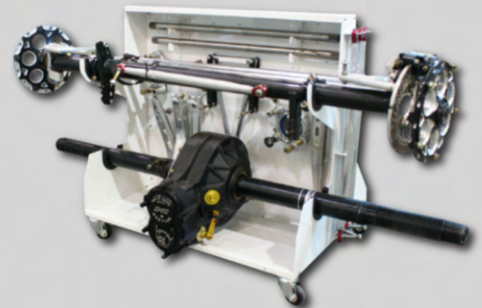
Part No.	Description	Price
<input type="radio"/> HRP6139	Lower Main Unit	\$691.75
<input type="radio"/> HRP6139-100	Add-On Top	\$328.90



ORGANIZE & STORE ALL BOLT-ON COMPONENTS FROM YOUR CAR

Customize with Available Options to Suit Your Needs

- Nurf Bars
- Front & Rear Bumpers
- Radiators
- Driveline Components
- Radius Rods
- Steering Gears
- Torsion Arms & Stops
- Bird Cages
- Jacobs Ladders
- Complete Rear Ends & Front Axles
- Bulk Storage for Large Items & Totes
- Storage Shelves for Smaller Items like Fuel & Steering Pumps



CORDLESS IMPACT SOCKET HOLDER

- Protective Rubber Cradles
- Impact & Socket not Included
- Adjustable Height to Fit a Variety of Impacts

NEW PRODUCT

Part No.	Description	Price
○ HRP6375-WHT	Cordless Impact Socket Holder	\$120.00
● HRP6376	Sprint Car Impact Socket	\$288.00



WHEEL WRENCH RACK

HRP's Wheel Wrench Rack Holds Most Popular Sizes of Wrenches

- Seen with Spacer Tray (Optional) to Optimize Storage
- Protective Rubber Cradles
- Wheel Wrench & Spacer Tray not Included
- Wheel Wrenches Available for Purchase Online at hrpracing.com

Finish	Wheel Wrench Rack	Spacer Tray (Optional)
White	○ HRP6356-WHT \$116.30	○ HRP6181-WHT \$52.80
Black	● HRP6356-BLK \$127.65	● HRP6181-BLK \$59.65



BEAD BREAKERS

Part No.	Description	Price
● HRP6018	HRP Deluxe 10"	\$59.00
● HRP6021	HRP Midget Deluxe 13"	\$59.00
● HRP6020	HRP Sprint Deluxe 15"	\$59.00
● HRP6023	J&J 15"	\$187.15



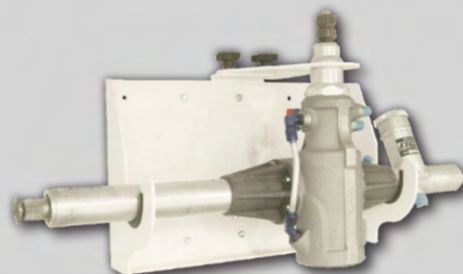
J&J: Aluminum



HRP: Zinc Plated with Retention Ball

STEERING GEAR RACKS

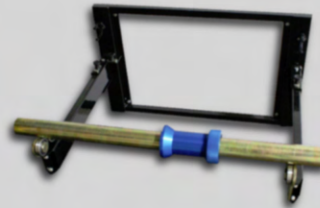
Part No.	Description	Price
○ HRP6780-1-WHT	Standard (Full Gear)	\$190.55
○ HRP6780-3-WHT	Gen 2 Gear	\$134.45
● HRP6780-3-BLK	Gen 2 Gear	\$153.10
○ HRP6780-4-WHT	GME Nields Power Steering	\$190.55



WHEEL BALANCER

- Acts as a Floor Stand or Wall Mount
- Anodized Components
- Includes Rubber Cradles for Storage Support
- Wheel Mandrel Includes Shaft & Nut

Style	Wheel Balancer	Wheel Mandrel
Sprint Car	<input type="radio"/> HRP6014-1 \$695.00	<input type="radio"/> HRP6014-600 \$306.20
Midget	<input checked="" type="radio"/> HRP6014-1-M \$816.50	<input checked="" type="radio"/> HRP6014-700 \$408.25



WHEEL COVER RACKS

Part No.	Fits	Price
<input type="radio"/> HRP6198-A-WHT	Sprint Car	\$72.00
<input checked="" type="radio"/> HRP6198-A-BLK	Sprint Car	\$76.00
<input type="radio"/> HRP6198-B-WHT	Midget	\$75.00



TIRE TAPE RACK

Holds Up to 3 Tire Tape Measures

HRP6160 \$7.70

10' TIRE TAPE

Fits Tire Tape Rack

HRP6823 \$5.70



WALL MOUNT TORSION BAR RACKS

PRO TIP: Sprint Car Torsion Bar Racks Work Great for Stock Car Sway Bars!

Part No.	Description	Price
Sprint Car		
<input type="radio"/> HRP6350-WHT	Single Row (12 Places)	\$156.50
<input checked="" type="radio"/> HRP6350-BLK	Single Row (12 Places)	\$165.40
<input type="radio"/> HRP6348-WHT	Double Row (24 Places)	\$222.30
Midget & Lightning		
<input type="radio"/> HRP6351-WHT	Single Row (12 Places)	\$156.50
<input checked="" type="radio"/> HRP6351-BLK	Single Row (12 Places)	\$200.10



SPRINT CAR SINGLE & MULTIPLE COMBINATION AXLE RACKS

All HRP Axle Racks Utilize Our Exclusive Rubber "U" Channels for Maximum Support & Protection

Part No.	Description	Price
<input type="radio"/> HRP6777-WHT	Holds 1 Front Axle Assembly	\$153.25
<input type="radio"/> HRP6778-WHT	Holds 2 Bare Front Axle Assemblies	\$140.00
<input type="radio"/> HRP6774-WHT	Holds 1 Rear Axle Assembly	\$200.70
<input type="radio"/> HRP6775-WHT	Holds 1 Rear & 1 Front Axle Assembly	\$243.15
<input checked="" type="radio"/> HRP6775-BLK	Holds 1 Rear & 1 Front Axle Assembly	\$277.85
<input type="radio"/> HRP6776-WHT	Holds 1 Rear & 2 Front Axle Assemblies	\$286.85
<input checked="" type="radio"/> HRP6776-BLK	Holds 1 Rear & 2 Front Axle Assemblies	\$314.25
<input type="radio"/> HRP6773-WHT	Holds 2 Complete Front Axles, 2 Rear End Assemblies, & 2 Bare Front Axles	\$474.10
<input checked="" type="radio"/> HRP6773-BLK	Holds 2 Complete Front Axles, 2 Rear End Assemblies, & 2 Bare Front Axles	\$523.70



HRP6777-WHT



HRP6773-WHT



HRP6778-WHT



HRP6774-WHT



HRP6775-WHT



HRP6776-WHT

MIDGET WALL MOUNT AXLE RACKS

Adjustable Widths

Part No.	Description	Price
<input type="radio"/> HRP6767-WHT	Holds 1 Front Axle Assembly	\$207.30
<input type="radio"/> HRP6764-WHT	Holds 1 Rear Axle Assembly	\$183.31



AXLE RACK CROSS PIECES

Find the Length that Matches Your Particular Axle Rack
- Extra or Replacement Pieces for HRP Axle Racks

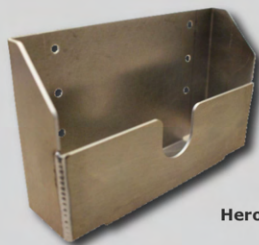
Part No.	Description	Price
<input type="radio"/> HRP6769-WHT	29.75" Wide	\$35.90
<input type="radio"/> HRP6770-WHT	31.25" Wide	\$35.90
<input type="radio"/> HRP6779-WHT	33.75" Wide	\$35.90
<input type="radio"/> HRP6768-WHT	Adjustable	\$55.05



HERO CARD TRAYS

It's a Breeze to be a Fan Favorite with These!
 - Mounting Hooks Fit Both Sizes of Card Trays

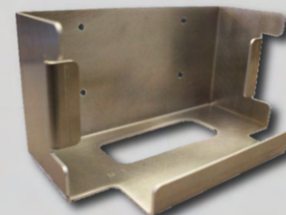
Part No.	Description	Price
Card Trays		
● HRP6145B	Fits 5" x 7" Cards	\$22.70
● HRP6145B-8X10	Fits 8" x 10" Cards	\$22.70
Mounting Hooks		
● HRP6145B-RB	Rear Bumper Hook - Sprint, Midget, Etc.	\$14.75
● HRP6145B-HK	Rear Spoiler Hook - Late Model, Modified, Etc.	\$14.75
Trailer Mount Racks		
● HRP6145B-WH	Fits 5" x 7" Card Tray & Either Style Hook	\$26.70
● HRP6145B-WH-8X10	Fits 8" x 10" Card Tray & Either Style Hook	\$25.95



Hero Card Tray



Mounting Hook



Trailer Mount Rack

NOSE WING TRAY

An HRP Favorite & Classic
 - Cover Easily Clips Into Place When in Use
 - Tucks Away Nicely For Storage

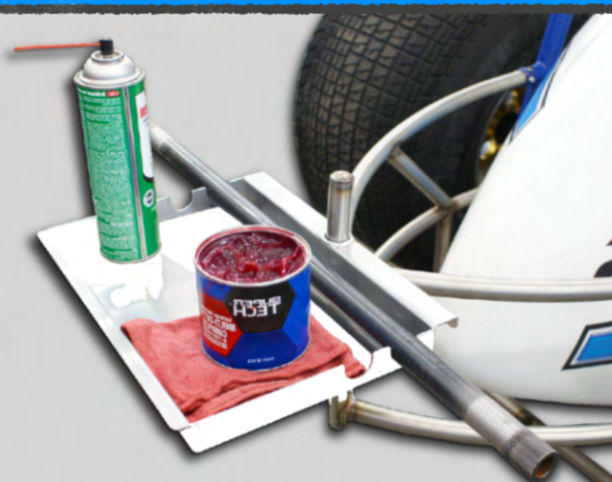
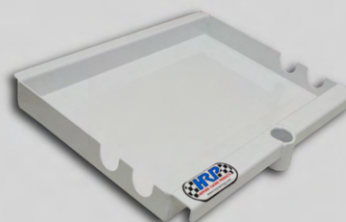


Part No.	Price
○ HRP6009-WHT	\$112.90
● HRP6009-BLK	\$112.90

TORSION BAR WORK TRAY

It's Never Been Easier to do Torsion Bar Maintenance or Changes!
 - Tray Mounts to the Front or Rear Bumper
 - Fits 2 Bars, Tools, Grease, & More All at Once!
 - Aluminum

○ **HRP6384-WHT** \$77.15



CABINET/WALL MOUNT RADIUS ROD RACKS

Build Your Radius Rod Rack: Finish with 2 Different Part Numbers

1) Select Desired Width			
15" Wide		20" Wide	
2) Select a Corresponding Upper Tray with Desired Amount of Rows / Spots			
Single Row (6 Rods)	Double Row (12 Rods)	Single Row (8 Rods)	Double Row (16 Rods)
<input type="radio"/> <input checked="" type="radio"/> HRP6523S-15-(WHT/BLK) \$88.20	<input type="radio"/> <input checked="" type="radio"/> HRP6521D-15-(WHT/BLK) \$104.74	<input type="radio"/> <input checked="" type="radio"/> HRP6523S-20-(WHT/BLK) \$99.25	<input type="radio"/> <input checked="" type="radio"/> HRP6521D-20-(WHT/BLK) \$123.50
3) Select a Corresponding Lower Tray that Fits Desired Diameter Rods			
1.125" Dia. Rods: <input type="radio"/> <input checked="" type="radio"/> HRP6523S-15B-(WHT/BLK) \$40.30	1.125" Dia. Rods: <input type="radio"/> <input checked="" type="radio"/> HRP6521D-15B-(WHT/BLK) \$40.30	1.125" Dia. Rods: <input type="radio"/> <input checked="" type="radio"/> HRP6523S-20A-(WHT/BLK) \$42.50	1.125" Dia. Rods: <input type="radio"/> <input checked="" type="radio"/> HRP6521D-20A-(WHT/BLK) \$42.50
1.250" Dia. Rods: <input type="radio"/> <input checked="" type="radio"/> HRP6523S-15C-(WHT/BLK) \$40.30	1.250" Dia. Rods: <input type="radio"/> <input checked="" type="radio"/> HRP6521D-15C-(WHT/BLK) \$40.30	1.250" Dia. Rods: <input type="radio"/> <input checked="" type="radio"/> HRP6523S-20D-(WHT/BLK) \$42.50	1.250" Dia. Rods: <input type="radio"/> <input checked="" type="radio"/> HRP6521D-20D-(WHT/BLK) \$42.50
N/A	1" Dia. Rods: <input type="radio"/> <input checked="" type="radio"/> HRP6521D-15A-(WHT/BLK) \$40.30	1" & 1.250" Dia. Rods: <input type="radio"/> <input checked="" type="radio"/> HRP6523S-20B-(WHT/BLK) \$42.50	1" & 1.250" Dia. Rods: <input type="radio"/> <input checked="" type="radio"/> HRP6521D-20B-(WHT/BLK) \$42.50
N/A	N/A	1.125" & 1.250" Dia. Rods: <input type="radio"/> <input checked="" type="radio"/> HRP6523S-20C-(WHT/BLK) \$42.50	1.125" & 1.250" Dia. Rods: <input type="radio"/> <input checked="" type="radio"/> HRP6521D-20C-(WHT/BLK) \$42.50



15" EXAMPLE:

- 1) 15" Wide
- 2) Double Row (12 Rods):
HRP6521D-15-(WHT/BLK) x1
- 3) 1" & 1.250" Dia. Rods:
HRP6521D-15A-(WHT/BLK) x1



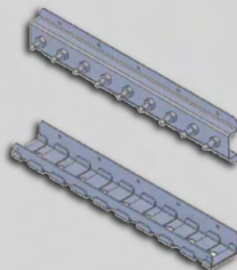
20" EXAMPLE:

- 1) 20" Wide
- 2) Single Row (8 Rods):
HRP6523S-20-(WHT/BLK) x1
- 3) 1.125" Dia. Rods:
HRP6523S-20A-(WHT/BLK) x1

MICRO SPRINT RADIUS ROD RACK

- Single Row - 9 Positions
- 20" Wide
- Upper & Lower Tray Included
- Includes (3) 0.437" & (6) 0.375" Diameter Pins

HRP6540-C \$136.10



RADIUS ROD MEASURING BOSS

- Quickly Adjust & Match the Replacement
- Knurled Edges for Superior Grip

HRP6208 \$62.40



CABINET/WALL MOUNT SHOCK RACKS

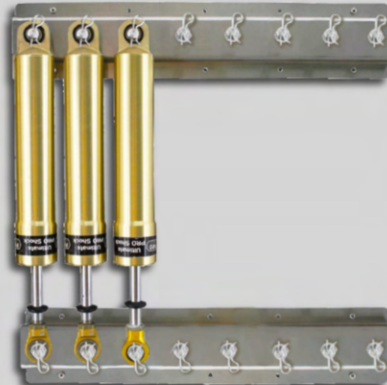
Build Your Shock Rack: Finish with 2 Of the Same Part Numbers (Sold Each: 2 Racks = 1 Complete Set)

1) Select Desired Width			
15" Wide		20" Wide	
2) Select a Corresponding Tray with Desired Amount of Rows / Spots			
Single Row (6 Rods)	Double Row (12 Rods)	Single Row (8 Rods)	Double Row (16 Rods)
<input type="radio"/> <input checked="" type="radio"/> HRP6524S-15-(WHT/BLK) \$88.20	<input type="radio"/> <input checked="" type="radio"/> HRP6522D-15-(WHT/BLK) \$88.20	<input type="radio"/> <input checked="" type="radio"/> HRP6524S-20-(WHT/BLK) \$99.20	<input type="radio"/> <input checked="" type="radio"/> HRP6522D-20-(WHT/BLK) \$126.80



15" EXAMPLE:

- 1) 15" Wide
- 2) Double Row (12 Rods):
HRP6522D-15-(WHT/BLK) x2



20" EXAMPLE:

- 1) 20" Wide
- 2) Single Row (8 Rods):
HRP6524S-20-(WHT/BLK) x2

See Rue Ring Clips on Page #44

SPARE STUDS

Sold Each

Radius Rod Rack Studs				
Double HRP6525	Single HRP6527	Single HRP6533	Single HRP6534	Single HRP6535

Radius Rod Rack Stud	Shock Rack Studs	Gear Pin Boss	Steering Rod Pin
Single HRP6536	Double HRP6526	Single HRP6528	HRP6538

THE QUICKEST & EASIEST SQUARING SYSTEM EVER!

SPRINT CAR SQUARING BLOCKS SET

These EZ Square Tools have Adjustable Blocks, which Quickly & Securely Mount to your Car & Cradle the Axle, Making it a Breeze to Set Height & Square - 5.5" - 8.0" Adjustability

HRP6011 \$345.90



Adjustability



Roller Bearings



Clamps Securely



SQUARE BLOCK ARM SET

HRP's (Optional Add-On) Adjustable Rule Arms Gives you Precise & Quick Setups All the Time!

- .5" Increments to 39," 40," & 41"
- Sold as a Pair

HRP6011-ARM-SET \$82.65



Adjustability



Built In Level

MOOSE BLOCKS

Market Price

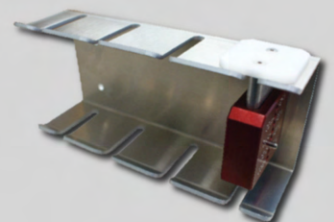
Part No.	Description
HRP6253	Tall Setup
HRP6251	Short Setup
HRP6254	Cradle Tops Set
HRP6249	Roller Top



MOOSE BLOCKS HOLDER

Wall Mount
- Holds Up to 4 Moose Blocks

● HRP6142A \$30.10



TIRE GROOVERS

The **HRP6014-1** Wheel Balancer Works Great for Tire Siping & Grooving: See on Page #21

VAN ALSTINE "ALL-IN-ONE" GROOVER

- Built-in Temperature Controls
- Cuts Up from .5"
- Requires & Includes "All-In-One" Blades

ALL10770 \$418.99



IDEAL HEATED KNIFE GROOVER

- 250 Watts / 110 Volts
- Adjustable Blade
- Control the Depth of the Cut

ALL-IHK125 \$95.00



TIRE GROOVER BLADES



Qty.	Round: #2 - 2/32	Round: #3 - 3/32	Round: #4 - 8/32	Round: #4 - 4/32	Flat: #6 - 4/32	Flat: #6 - 6/32	Price
Single	ALL10268	ALL10269	ALL10274	ALL10276	ALL10272	ALL10273	\$1.15
12 Pack	ALL10268-12	ALL10269-12	ALL10274-12	ALL10276-12	ALL10272-12	ALL10273-12	\$14.99

GRINDING DISK

Grind Off the Hardened Outer Skin of Your Dirt Track Tires

- Create Round, Aggressive Sipes
- 4", 23 Grit, 5/8" Arbor

ALL44180 \$43.99



6 BLADE TIRE SIPER

- Adjustable Depth
- Uses Standard Blade Size
- Black Anodized Aluminum Assembly
- Etched HRP Logo

● **HRP6201** \$113.40



HAND REAMER FOR KING PINS / AXLES

- .859"
- Includes a Protective Case

HRP6107 \$194.25



5/8-18 FINE THREAD TAPS

Part No.	Description	Price
ALL11066	Right Hand	\$14.99
ALL11067	Left Hand	\$14.99



CHEVY SPRINT CAR ENGINE CART

- Heavy Duty Casters
- Solid Frame - Support Worthy of Any Engine
- Ships UPS Ground
- Easy Assembly

● **HRP6002-600** \$272.20



OPTIONS

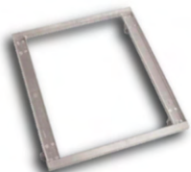
Part No.	Description	Information	Price
● HRP6004	Adapter Plate for Small Block	Use with HRP6002	\$30.10
● HRP6002	Engine Stand 1" Dia. Plated Tubing	Use with HRP6004	\$83.95
● HRP6003	Engine Cart Stand Base - 24" x 21"	Includes Casters	\$90.20



HRP6004



HRP6002



HRP6003

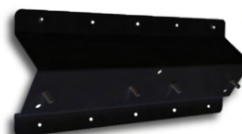
CHEVY ENGINE LIFT PLATE

● **HRP6001** \$25.55



HEADER MOUNTS

Engine Style	Angled Design	Flat Design
Chevy Spread Port	○ ● HRP6700A-(WHT/BLK) \$38.05	○ ● HRP6700F-(WHT/BLK) \$33.50
Chevy Standard Port	○ ● HRP6701A-(WHT/BLK) \$38.05	○ ● HRP6701F-(WHT/BLK) \$33.50
Chevy Big Block	○ ● HRP6705A-(WHT/BLK) \$41.45	○ ● HRP6705F-(WHT/BLK) \$41.45
Dodge	○ ● HRP6706A-(WHT/BLK) \$41.45	○ ● HRP6706F-(WHT/BLK) \$41.45
Ford	○ ● HRP6707A-(WHT/BLK) \$41.45	○ ● HRP6707F-(WHT/BLK) \$41.45





ENGINE ASSY STAND

HRP's Heavy Duty, Robust Design Features:

- An Adjustable Bracket to Locate to Almost Any Engine Block
- A Quick Set Brake System for Locking Engine Rotation
- An Oil Drain Pan
- Heavy Duty Casters
- Blue Powder Coating
- Breaks Down for Shipping, (Assembly Required)

● **HRP6029** \$1,595.00

NEW PRODUCT



REAR END WRENCH

Removes Rear End Gear Lube Fill Plug

- Mild Steel
- Fits Old Style Winters

● **HRP6105** \$24.95



CAR CARTS

Full Size, Midget, Lightning, Micro, & Junior Sprints, & Most Small Cars

- Easily Move and Raise Your Car to a Workable Height
- Car Cart Riser Kit Available for Raised Rail Chassis
- Sold in Pairs

Part No.	Description	Price
● HRP6210	Car Carts	\$368.80
● HRP6210-200	Riser Kit for Raised Rail	\$26.70



TOP WING WALL TRAYS

Fits Full Size, Lightning, & Micro Sprints

- Adjusts Up to 74" Long
- .090" 5052 Aluminum
- Works With All Popular Wing Sizes

Part No.	Price
<input type="radio"/> HRP6550-WHT	\$96.40
<input checked="" type="radio"/> HRP6550-BLK	\$113.40

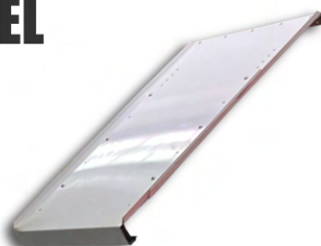


TOP WING ROOF MOUNT PANEL

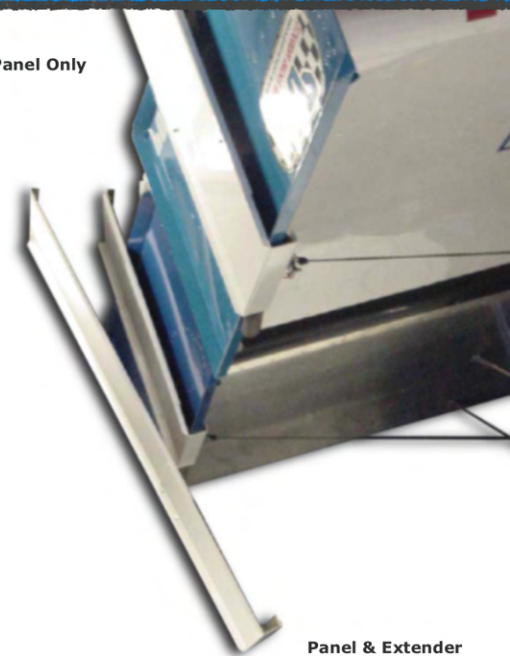
Mounts ONE Sprint Car Top Wing

- See Options Below for Mounting Additional Wings

Part No.	Price
<input type="radio"/> HRP6551-WHT	\$119.10
<input checked="" type="radio"/> HRP6551-BLK	\$140.65



Panel Only



Panel & Extender

TOP WING ROOF MOUNT EXTENDER / SET

The "Roof Mount Panel Only" Above Hangs 1 Sprint Car Top Wing. To **Mount Additional Wings**, Purchase the "Extension Only" Below to Extend an Existing Roof Mount Panel **or** Purchase the "Mount & Extender Set" for Both!

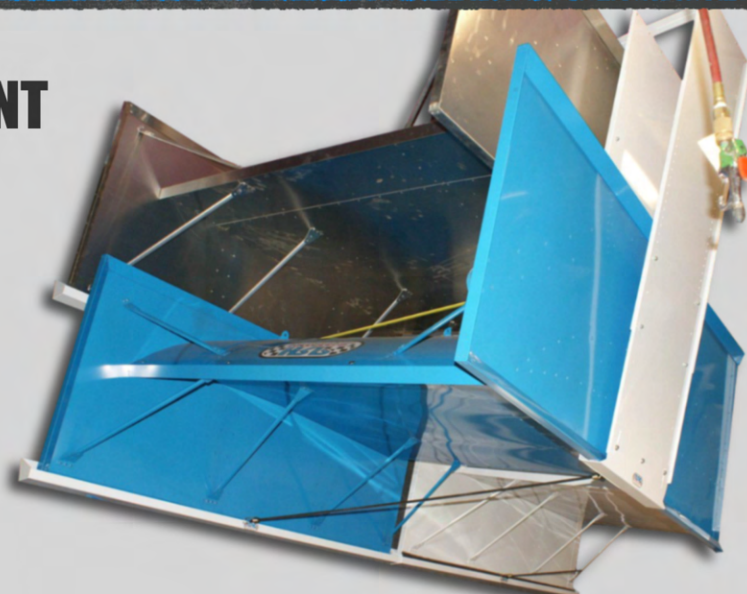
Part No.	Description	Price
<input type="radio"/> HRP6554-WHT	Extender ONLY	\$68.05
<input type="radio"/> HRP6555-WHT	Mount & Extender Set	\$141.75

ADJUSTABLE TOP WING ROOF MOUNT

Our Newest Design in Spring Car Top Wing Hangers

- Fully Adjustable & Adapts to Securely Fit Any Top Wing
- Mounts Additional Wings

HRP6557-WHT \$158.80

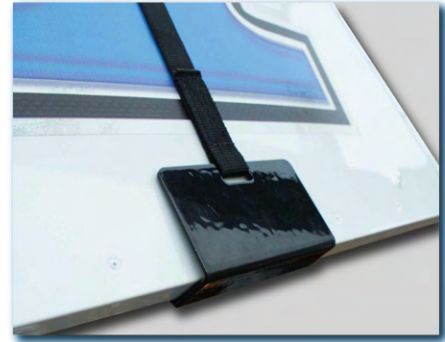


TOP WING CINCH STRAP HOOK KIT

We Recommend the Use of 2 Straps Per Top Wing

- 80" Full Extended Length
- Mounts to Trailer Ceiling
- Sold Each
- Possible to Hang Multiple Wings (Double Stacked)

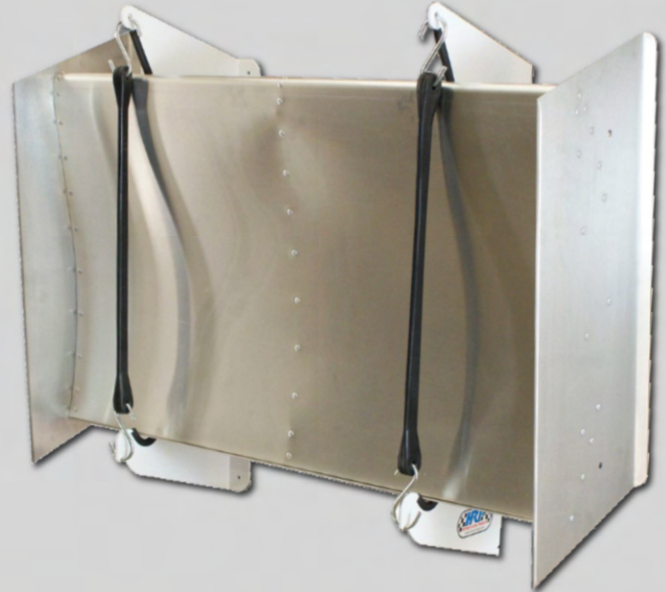
● **HRP6772** \$78.85



NOSE WING WALL MOUNTS

Includes 2 Bungees

Part No.	Description	Price
Adjustable Mounts		
○ HRP6556-WHT	Fits Any Sprint Car Nose Wing	\$141.75
● HRP6556-BLK	Fits Any Sprint Car Nose Wing	\$156.50
Standard Mounts		
○ HRP6553-WHT	Fits Full Size Sprint - 24" x 26"	\$85.05
● HRP6553-BLK	Fits Full Size Sprint - 24" x 26"	\$96.40
○ HRP6549-WHT	Fits Lightning Sprint - 18" x 30"	\$82.25



15" NOSE WING MOUNT BUNGEE

Replacement / Spare Nose Wing Mount Bungee

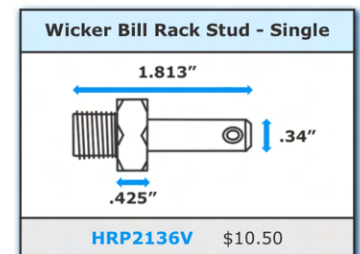
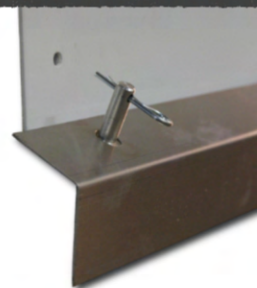
HRP6548 \$6.85



WALL MOUNT WICKER BILL RACK

See Rue Ring Clips on Page #44

○ **HRP6790-WHT** \$107.75





***STREETER
SUPER STANDS***

LIFTS & STANDS

KARTS, QUARTER MIDGETS, WINGED OUTLAWS

STREETER BIG FOOT MODELS

All Models Feature:

- Pneumatic Wheels & Casters
- Precision Laser Cut Tubing & Fixture Welding
- A Convenient Folding Tray
- Easy Storage (Folds Up)

Part No.	Style	Height	Tubing	Material	Price
● STR-2000-500-BLK	"Standard" Big Foot	34"	1.00"	16 Gauge Steel	\$327.20
● STR-2000-500-RED	"Standard" Big Foot	34"	1.00"	16 Gauge Steel	\$327.20
● STR-2000-500-BLU	"Standard" Big Foot	34"	1.00"	16 Gauge Steel	\$327.20
● STR-2500-500-BLK	"Fatty" Big Foot	34"	1.25"	14 Gauge Steel	\$340.05
● STR-2600-500-BLK	"Shordy" Big Foot	28"	1.00"	16 Gauge Steel	\$320.80



"STANDARD" BIG FOOT

Junior Drivers, Quarter Midgets, Winged Outlaws, Etc.

"FATTY" BIG FOOT

Heavier Karts: Shifters, TaG, Winged Outlaws, Etc.

"SHORDY" BIG FOOT

Junior Drivers, Quarter Midgets, Winged Outlaws, Etc.



STREETER BIG FOOT ADD-ONS / ACCESSORIES

KART STOPS

- Prevent Chassis Slips & Falls
- Compatible with Any Big Foot Model
 - Easy Installation & Uninstallation
 - 4 Kart Stops Per Pack = 1 Stand

● **STR-9000-506** \$27.05



STREETER TRAY PIN / CLIP

- Spare / Replacement Pin for Big Foot & Roller Stand Fold-Up Trays
- Keeps Tray in Raised Position

HRP5914 \$1.20





STREETER SUPER LIFT

Kart Racers, Quarter Midgets, Champ Karts, & Winged Out Laws

- Adjustable Anodized Lift Hooks
- Adaptable to Any Rear Bumper Style
- 1.25" Tubing
- 14 Gauge Steel
- Ships UPS Ground

Part No.	Price
● STR-2800-500-BLK	\$930.25
● STR-2800-500-RED	\$930.25
● STR-2800-500-BLU	\$930.25



BELT DRIVE SYSTEM

Safer & More Efficient Than a Cable Drive System

NO EXPOSED WIRES

All Wiring Runs Inside the Push Handle Tube, Creating a Safer Lift & a More Visually Pleasing Appearance

YOU'RE COVERED

Our Exclusive Battery Cover Protects Terminals From Dropped Tools or Parts

SUPER LIFT LATCH KIT

Easily Lock & Release the Lift in the Raised Position. Factory Provided with All Super Lifts 2019 & Newer. Pre-2019 Super Lift Latch Kits are Available at hrpracing.com



SUPER LIFT UPPER TRAY

- Attaches to Control Handle
- Holds Your Tools and Parts While Working on Your Kart
- Features a Handy Drink Holder: A Nice Addition for a Pre & Post Race Beverage

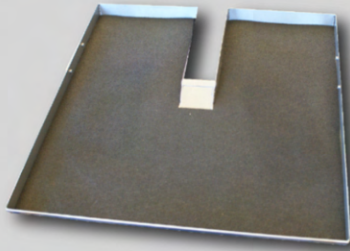
● **STR-2800-511** \$96.30



SUPER LIFT LOWER TRAY

- Attaches to Frame
- Includes a Protective Rubber Mat
- Perfect for Holding Starters, Tools, & Parts

● **STR-2800-506** \$96.30



SUPER LIFT AIR TANK HOLDER

- Attaches to the Base of the Frame & the Battery Mount
- Fits Most Air Tanks Up to 5 Gallons
- Silver Arms of the Lift Must Clear the Tank

● **STR-2800-509** \$74.50

AIR TANK

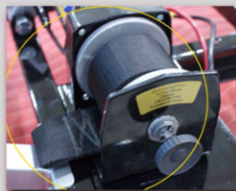
- 5 Gallon Air Tank
- The Perfect Size for Our Super Lifts
- Includes a Gauge, a Standard Tire Valve Air Chuck & Hose

● **STR-2800-510** \$64.20



SUPER LIFT REPLACEMENT COMPONENTS

Part No.	Description	Price
STR-2800-514	2" Wide Nylon Belt	\$35.00
STR00320	Bulldog Winch 2000	\$116.70
STR00244T	Lift Stand Hook	\$46.35
STR00321	Control Switch	\$57.80



CIK/SPRINT STYLE STREETER STACKERS

Display, Store, & Transport Multiple Karts at Once

- 1.25" Tubing
- 14 Gauge Steel
- Laser Cut Gussets & Cinch Strap Holes
- Stainless Steel Pins for Easy Assembly & Disassembly
- 8" Pneumatic Casters
- Ships UPS Ground

Part No.	Price
Double Stackers	
● STR-2400-500-BLK	\$423.45
● STR-2400-500-RED	\$423.45
● STR-2400-500-BLU	\$423.45
Triple Stackers	
● STR-2400-530-BLK	\$538.95
● STR-2400-530-RED	\$538.95
● STR-2400-530-BLU	\$538.95



DOUBLE WIDE STACKER

Oval Karts/Full Bodied Karts

- Over 44" of Inside Width Clearance, (50" Overall)
- Fits Within Most Full Size Pickup Truck Beds & Cargo Trailers

- STR-2900-500-BLK \$415.80



STACKER INSERTS

Transform your Existing Double Stacker Into a Triple Stacker!

- 1 Stacker Pin Kit is Needed for Installation (Sold Separately)

Part No.	Description	Price
● STR-2400-503-BLK	CIK/Sprint Style Stacker Insert	\$186.10
● STR-2900-503	Oval/Full Bodied Stacker Insert	\$170.00

STACKER PIN PACK

- Includes 4 Pins
- Stainless Steel

- STR-2400-509 \$46.70





UPRIGHTS

- Exclusive Laser Cut Gussets with Cinch Strap Hook Holes
- A Rubber Support Mat & Bracket, Securing the Axle
- 3" Poly Casters, Making it Easy to Maneuver

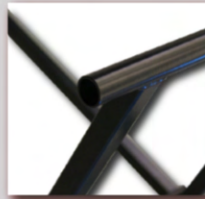
Part No.	Description	Price
● STR-1800-500-BLK	Full Size Sprint Karts	\$173.25
● STR-3000-500-BLK	Kid Kart	\$184.90



REGULAR NON ROLLING KART STAND

For Any Kind of Racing

- STR-2100-500-BLK \$102.70



MULTI LEVEL STACKER TABLE TOP

Utilize Your Stacker as a Workbench, Display, or Serving Area

- .100 Aluminum
- Durable & Easily Cleaned
- Multiple Levels of Storage & Surface
- Easy Installation & Uninstallation

Part No.	Description	Price
○ STR-2400-540	Fits Stackers with the Length of 45.75": 2020-Newer	\$160.40
○ STR-2400-540-A	Fits Stackers with the Length of 47": 2010-2018	\$99.95



WALL MOUNT ENGINE RACKS

- Holds 2 & 4 Cycle Engines
- Adjusts to Common Karting Style Mounts
- Powder Coated Endplates & Stainless Steel Rods

Part No.	Description	Price
○ HRP6343-3	3 Places	\$139.50
○ HRP6343-1	1 Place	\$93.00

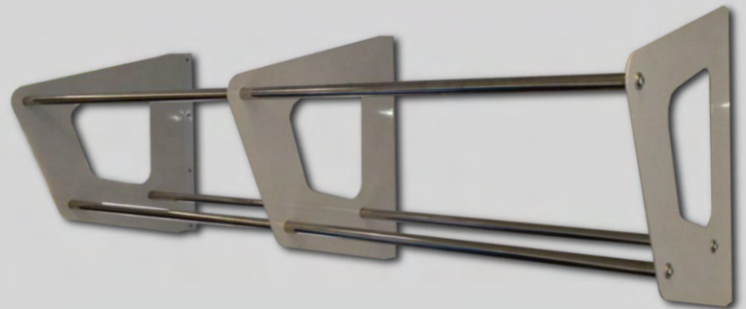


KART TIRE RACKS

Karts (5" & 6" Wheels), Winged Outlaws, Quarter Midgets

- End/Center Plate Dimensions: 12.013" x 13.067"
- White Powder Coated Aluminum End & Center Plates
- Center Plates on 80" Model Only
- Stainless Steel Support Rods

Part No.	Length	Price
○ HRP6341-48	48"	\$152.00
○ HRP6341-64	64"	\$173.55
○ HRP6341-80	80"	\$205.30



WALL MOUNT AXLE RACKS

All U.S. and Metric Sizes Up to 50mm

Part No.	Description	Price
● HRP6353	Single Row	\$160.25
● HRP6353-D	Double Row	\$242.70



REPLACEMENT WHEELS



Part No.	Description	Use On	Price
HA00081	10" Wheel / Tire	Big Foots & Super Lifts	\$29.25
HA00082	8" Swivel Caster	Big Foots, Super Lifts, & Stackers	\$29.25
HA00086	8" Rigid Caster	Stackers	\$29.25

Part No.	Description	Use On	Price
HA00086-NF	8" Rigid Caster - Flat Free	Stackers	\$27.00
HA00087	3" Swivel Caster	Uprights	\$5.00
-	-	-	-

BEAD BREAKER

5" & 6" Kart Racing Rims & Winged Outlaw Karts

- Fully Adjustable
- Anodized Components
- Powder Coated Base

● **STR-1400-500** \$83.45



13" HRP STEERING WHEEL

- Flat
- 1.25" Dia. Aluminum Tubing

● **HRP8028F-125-13** \$72.50



MPI STEERING WHEELS

Part No.	Description	Price
● MPI-KD-14-A	Dirt Karting & Lightning Outlaws - 13.75"	\$160.25
● MPI-KP-12-A	Karting, Quarter Midget, & Lightning Outlaws - 11.75"	\$242.70
● MPI-KQR-11-A	Quarter Midget - 11" Round	\$150.00
● MPI-KQS-11-A	Quarter Midget - 11" Square	\$229.00



**HRP 2021 T-SHIRT**

HRP9029-(S/M/L/XL) \$15.00
 HRP9029-(XXL/XXXL) \$17.00

**HRP 2021 HOODIE**

HRP9039-(S/M/L/XL) \$35.00
 HRP9039-(XXL/XXXL) \$38.00

**HRP GRAY SNAPBACK**

HRP9018-GRAY \$22.00

**HRP CAMO SNAPBACK**

HRP9017-CAMO \$22.00

HRP BASEBALL CAPS

Part No.	Description	Price
● HRP9020	Non-Fitted Unisex Baseball Cap	\$14.00
● HRP9021-Y	FlexFit Youth Baseball Cap	\$24.00
● HRP9021-SM	FlexFit Small/Medium Baseball Cap	\$24.00
● HRP9021-LXL	FlexFit Large/X-Large Baseball Cap	\$24.00

**HRP DECALS**

Part No.	Size	Price
HRP9000	1.62"	\$1.00
HRP9001	2.88"	\$1.00
HRP9003	8.00"	\$2.50
HRP9006	20.00"	\$6.00

**STREETER DECALS**

Part No.	Size	Price
STR9002	1.000" x 2.125"	\$0.55
STR9004	2.625" x 4.375"	\$0.90
STR9007	4.625" x 7.125"	\$1.10

**HEAVY DUTY ALUMINUM HANGERS**

Your Race Gear Deserves to be Taken Care of
 - Etched HRP Logo

Part No.	Price
● HRP6800-BLK	\$7.95
● HRP6800-BLU	\$7.95
● HRP6800-RED	\$7.95
● HRP6800-CLR	\$7.95
● HRP6800-VLT	\$7.95



HRP MULE CONVERSIONS

HRP Leads the Industry in Kawasaki Mule Conversions



**DESIGNED & BUILT
BY RACERS, FOR
RACERS**

Visit hrpracing.com for
More on HRP Mule
Conversions



**THE OPTIONS ARE ENDLESS!
CALL OR EMAIL TODAY TO GET YOUR
PERSONAL BUILD SHEET**

Email: hrpsales@ghilaser.com
Phone: 262-457-5015



ISC RACERS TAPE 90'

Part No.	Price
● WPS-10-2300BK	\$12.50
● WPS-10-2300BL	\$12.50
● WPS-10-2300R	\$12.50
○ WPS-10-2300W	\$12.50
● WPS-10-2300Y	\$12.50



ISC
racerstape

HEADER WRAP

1/16" x 2" x 50'

52-64870 \$65.00



SAFETY WIRE PLIERS

ALL10120 \$34.99



SAFETY WIRE SPOOL

0.32" Stainless Steel

ALL10121 \$16.99



VALVE STEM CORE REMOVER

WPS-85-4106 \$3.95



NITRO-BEE SYSTEM

Rugged Radios Race Receiver

RR-NITRO-BEE-UHF \$99.00



WESTHOLD WIRELESS

Only Compatible With Tracks/Series Utilizing the Westhold Transponder System



TRANSPONDER KIT

Includes Transponder, Charger, & Pouch

HRP8991 \$240.00



REPLACEMENT POUCH

HRP8992 \$26.00



REPLACEMENT CHARGER

HRP8993 \$40.00



RUE RING CLIPS

Aluminum

Part No.	Dia.
HRP8409-250	0.250"
HRP8409-312	0.312"
HRP8409-375	0.375"
HRP8409-500	0.500"



6" MAGNETIC PARTS DISH

WPS-57-8485 \$9.99



SPRING HOOK TOOL

WPS-57-8549 \$8.99



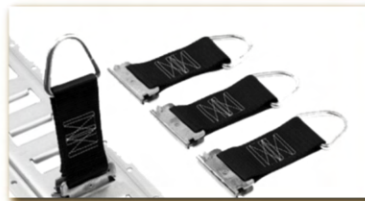
RACING OPTICS TEAR OFFS

Part No.	Fit	Price
ROP7204C	Simpson RX & Impact Champ	\$29.95
ROP7230C	Impact Vapor & Charger	\$29.95
ROP10209C	Simpson Shark, Super Shark, & Vudo	\$33.95



E-TRACK & RINGS

Part No.	Description	Price
E-Track		
WPS-29-3050	Pair of 36"	\$34.95
WPS-29-3051	Pair of 58"	\$49.95
Rings		
WPS-29-3053	O-Rings - 4 Pack	\$34.95
WPS-29-3052	D-Rings - 4 Pack	\$23.95



E-TRACK FLOOR PLATE

WPS-29-3054 \$22.95



LONGACRE RACING PRODUCTS

We Proudly Carry the Latest in Scale Technology From Longacre, Along With Scale Pads, Cases, & Setup Equipment

- Tire Gauges, (Page #17), Tire Marking Pens & Sticks, Acculevel Camber, Scale Ramp Kits, & More
- Find your Perfect Setup Online at hrpracing.com



Part No.	Description	Price
52-50612	Mini Pyrometer IR 600 Degree	\$104.00
52-72537	Scale Ramp Kit 2.5" (Set of 4)	\$512.00
52-50882	Tire Marking Pen	\$11.00
52-50880	Tire Marking Stick	\$9.00
52-78292	Acculevel 5/8" Caster / Camber	\$272.00



QUICK2 MEASURING CUP

WPS-78-9830 \$5.50



RATIO RITE MIXING CUP

WPS-28-1111 \$6.95



PRO BLEND MOTORSPORTS

Flip Top Bottle Anti-Seize

HRP8446 \$8.25



LUCAS OIL PRODUCTS, INC.

Part No.	Description	Price
WPS-58-5308	Brake Cleaner (14 oz)	\$4.75
WPS-58-5286	Fuel Stabilizer (1 qt)	\$11.50
WPS-58-5309	Contact Cleaner	\$9.50



DISPOSABLE GLOVES

Part No.	Size	Price
WPS-59-9211L	Large Gloves	Market
WPS-59-9211X	X-Large Gloves	Market



WILWOOD BRAKE FLUID

Part No.	Description	Price
WIL290-0632	570 Dot 3 (12 oz)	\$9.99
WIL290-6209	EXP 600 Plus (16.5 oz)	\$18.79



RED LINE

Part No.	Description	Price
WPS-57-6502	2 Cycle Racing Oil	\$12.95
WPS-57-6510	Water Wetter	\$11.95



K&N

Part No.	Description	Price
KNE99-0516	Air Filter Oil Spray (12 oz)	\$6.99
KNE99-0606	Air Filter Cleaner Spray (12 oz)	\$6.99
KNE99-0551	Filter Oil (1 gal)	\$23.99
KNEHP-3002	Heavy Duty Chevy Oil Filter	\$11.99



MUD-X

Part No.	Description	Price
MX100	1 Quart	\$13.95
MX101	1 Gallon	\$26.95



WABAM

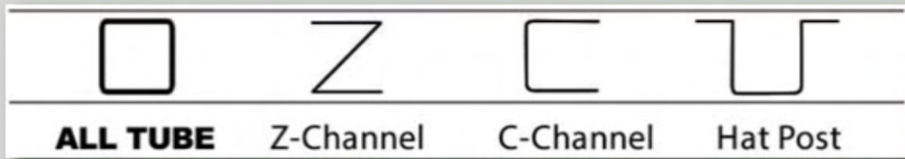
Part No.	Description	Price
W30101	WABAM Shine (12 oz)	\$9.99
W50101	WABAM Blast (18 oz)	\$6.99
W40101	WABAM Glass (19 oz)	\$3.99
W10101	WABAM Hand Soap (16 oz)	\$9.99
HRP6192	Shop Towels (200CT)	\$12.99
W20101	WABAM Wet Wipes (75CT)	\$11.99



SUGGESTIONS ON INSTALLING YOUR TRAILER ACCESSORIES

While installation and mounting methods are at the sole discretion of the purchaser, the following information is our suggested methods and techniques. Keep in mind that each trailer manufacturer will differ and one does not fit all. Research and inspection may be required.

These are the most commonly used styles of trailer wall studs. It is best to know what style you have prior to beginning an installation to choose the best hardware and backing, if needed.



TEK SCREW

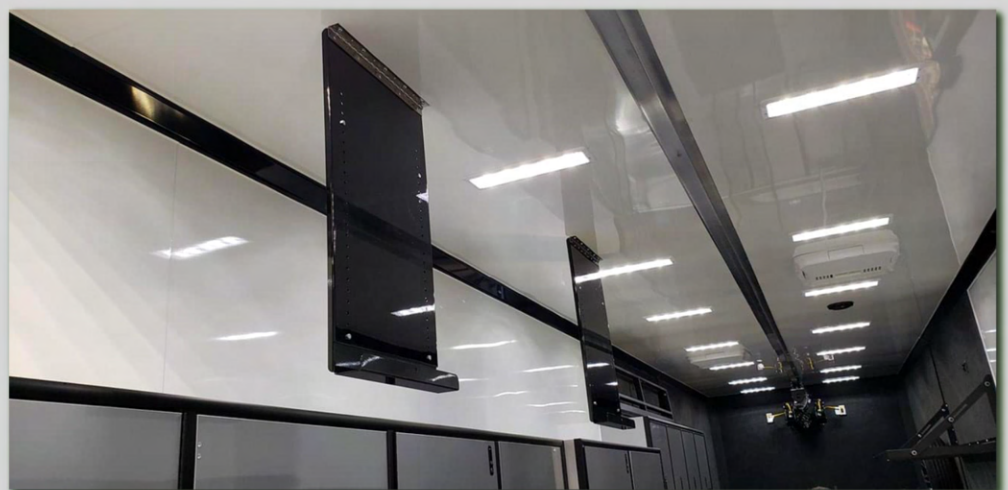
We suggest using #10 or #12 Tek Screws with a Hex Head. Most applications will require 1" & up to 1.5" length screws.



Confirm the proper length for your installation.

Be aware of any electrical wiring, air lines, fuel lines, LP lines, or other obstructions within your trailer. Smaller items may only need to be affixed to a single wall stud while longer items and those of substantial weight will require multiple stud installation. Some items like tire and jug racks, overhead cabinets, and others that may not meet all stud locations will require the use of a backing plate or backing bars. Plywood walls will not suffice as the primary holding point for any accessory and doing so is at the risk of the installer. Check the fitting of your accessories after installation and following at least once a year to assure everything is in place and secure.

A more detailed information sheet can be found online at: <http://www.hrpracing.com/producttechsupport>





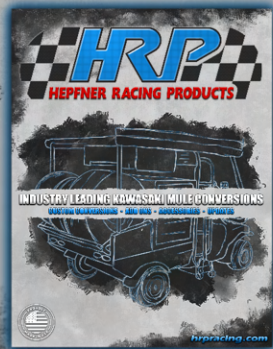
GOTTA ROLL WITH THE BEST TO BE THE BEST

hrpracing.com



CHECK OUT THESE ADDITIONAL CATALOGS

Available Online at hrpracing.com



MULE CONVERSIONS & ACCESSORIES

HRP Leads the Industry in Kawasaki Mule Conversions. All Mules are Custom Built From the Front Push Bumper to the Personalized Rear Name Plate. Conversions can be Outfitted With Many Options From Air Compressors to Generators & Many Different Racks to Organize Your Tools & Spare Parts to Keep your Race Team Running Smooth

SPRINT CAR RACING'S #1 SELLING WINGS & COMPONENTS

40+ Pages of HRP's Industry Leading Sprint Car Wings & Components. From Driveline to Body Components, Wing Trees to Bumpers, Front Axles to Torsion Bars- This Catalog has it all!

Prices Subject to Change