



DOUBLE & TRIPLE STACKER ASSEMBLY GUIDE

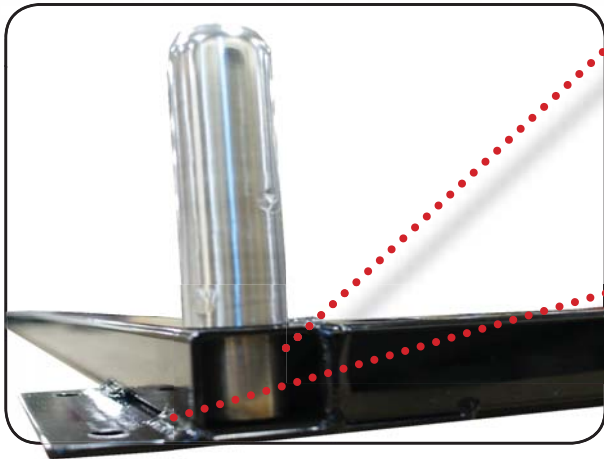
For Streeter Super Stands Sprint and Oval Style Double & Triple Stackers



streetersuperstands.com



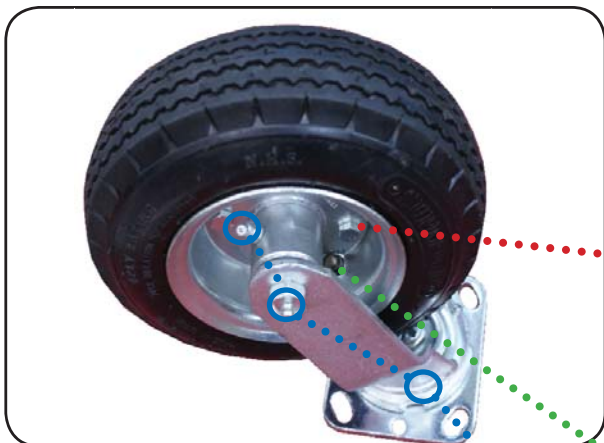
The bottom frame (base) is a full welded piece. The only items needing to be installed are the location pins and the casters. The pins will screw right into each corner of the frame. Hardware for caster installation was included in the caster kit which was shipped in their own box separately from Stacker frame components.



Pins screw in. If you wish, use pliers to snug the pins- however be certain to use a rag or piece of material as cover to prevent marking/scoring the pins. Thread locker can also be used on the threads to help reduce the chance of the pins loosening during transport.

Casters will bolt to the plates on the bottom frame (base). There are two swivel casters and two rigid casters included. Most users will install the swivel casters on the rearward plates, as to make maneuvering easier while pushing the stacker.

PLEASE TAKE A MOMENT TO ATTEND TO THE CASTERS INCLUDED WITH YOUR STACKER



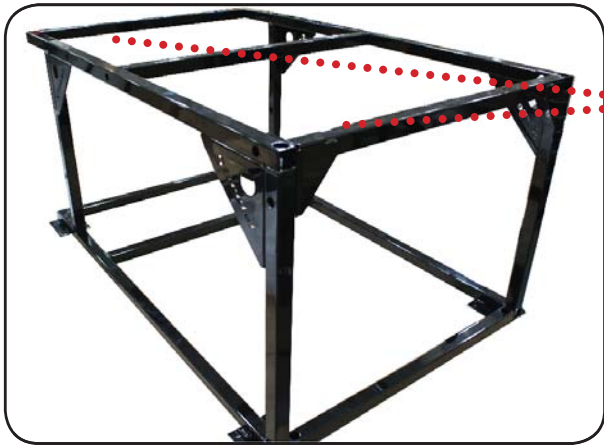
For continued optimum performance of your Streeter Super Stands Stacker we suggest some simple maintenance and checks on the pneumatic casters prior to initial use and periodically thereafter:

(1) Check tightness of the four wheel & hub mounting bolts/nuts.

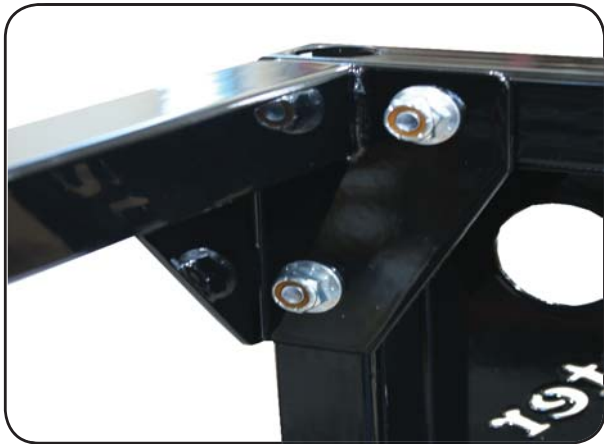
(2) Adjust air pressure to the specified rating listed on the sidewall. Never exceed the rated air pressure.

(3) Grease/spray-lube the spindle, hub and caster plate bearings (if applicable). Proper lubrication will reduce bearing fatigue/grind.





The cross supports get bolted to the main rails. Match the two end supports to their proper bolting location. There are two end supports, one having welded gussets (see below).



The cross bar with welded gusset tabs will match up and connect to both the horizontal and vertical posts of the upright. **At this point you want to be certain to take care while tightening the bolts into weld nuts. These need to be gently tightened, not cranked on.**



The center cross support can be installed in one of two locations, whichever will best suit your need for supporting your kart while on the stacker.



The same procedures above apply for building a triple section, however additional pins would be installed onto the center (double) section of the stand.



QUESTIONS?

For assembly, setup, use and technical assistance, contact us at: (262) 457-5018

Great Accessories For Your Streeter Super Stands Stacker

STACKER TABLE TOP

Streeter Super Stands Stacker Table Tops are a must have item for owners of Double or Triple Stackers. Why push your stacker off to the side once you get to the track or back to the shop? Now, with the easily installed (and easily removed) Stacker Table Top, You can utilize your Stacker as a work bench, display, or even use it as a serving area at your trackside cookout. Made from durable and easily cleaned .090 gauge aluminum, the Stacker Table Top will be one pit item you truly can call convenient. The top fits standard Streeter Double & Triple Stackers, and can safely be stored during transport. Great for use at the track, at home, and at the shop.



Stacker Table Top STR0015V \$125.00

STACKER TIRE RACK

The Streeter Super Stands Double & Triple Stacker Tire Rack is a great add-on for carrying your extra tires/wheels. Installs with four bolts and is the perfect length to match up to the current Streeter Super Stands Stackers. Will work with both Double and Triple Stackers. Aluminum end plates and stainless steel support rods are the same that we use on our great looking, strong, and very popular wall mount tire racks. If your race gear includes extra tires/wheels, a Streeter Super Stands Stacker Tire Rack is a sweet option for transport, storage, and saving space.



Stacker Tire Rack STR-3000-500 \$95.00



streetersuperstands.com

