



MULE CONVERSIONS ACCESSORIES & ADD-ONS



Motorsports teams around the world have their customizing done by Hepfner Racing Products (HRP). Tool boxes, storage cabinets, generators, lighting, compressors, shock kits, wheel & tire updates and more! For racing or special utility use, HRP will customize your Mule.



2133 CONSTITUTION AVENUE
HARTFORD, WI 53027
262.457.5018 phone
262.670.9400 fax

Our Mule conversions are the most used pit vehicle in open wheel racing. They have evolved over the past 10 years into a "Must Have" for all race teams. HRP is the leader in conversion kits and accessories for Do-It-Yourself applications, or let us supply a complete Mule conversion from start to finish for you. When it comes to quality, experience, innovation, service and knowledge- HRP is the leader. Don't trust your investment with anyone else.



www.hrpracing.com

1

YOU DEMAND THE BEST. WE BUILD IT.

KAWASAKI MULE EVOLUTION

Over the past 15 years Kawasaki has kept the basic chassis design the same, changing only the style of the body. Below are 3 models that have been built.

Model Years 1990 - 2000



2500 Series 2x4
2510 Series 4x4

Model Years 2001 - 2008



3000 Series 2x4
3010 Series 4x4

Model Years 2009 - present



4000 Series 2x4
4010 Series 4x4



HRP Mule Conversions

Options and Specs:

- Custom Colors
- Air and Power Options
- Dry Weight Stock: 1400#
- Weight Dry HRP Conversion: 2000#
- Weight Fully Loaded Approx: 2500#
- Standard Height with Standard Turf Tire 72.50"

Retro fit your own Mule or let HRP Supply yours Complete!





HRP MULE CONVERSIONS & ACCESSORIES



HRP6930
 32" Tall Cabinet - Single 24" Wide Drawer Stack
 Complete Conversion Ready To Install
 \$8,000.00



HRP Mule Conversions 32" Tall
 Fits: 2500, 3000, and 4000 Series
 Includes: Top Deck
 Bolt on Ladder
 Push Bar
 Jack Mount
 Ctech Drawers
 Driver Side Cabinets
 Adjustable Shelves
 Rear Fenders and Skirts
 Custom Name Plate
 Tail Gate Area
 Wheel Covers & Brackets



HRP6929
 32" Tall Cabinet - Single 30" Drawer Stack
 Complete Conversion Ready To Install
 \$8,000.00

HRP6931
 32" Tall Cabinet - 30" & 20" Double Drawer Stack
 Complete Conversion Ready To Install
 \$8,800.00



HRP Mule Conversions 32" Tall
 Fits: 2500, 3000, and 4000 Series
 Includes: Top Deck
 Bolt on Ladder
 Push Bar
 Jack Mount
 Ctech Drawers
 Driver and Passenger Side Cabinets
 Adjustable Shelves
 Rear Fenders and Skirts
 Custom Name Plate
 Wheel Covers & Brackets



HRP Mule Conversions 48" Tall

- Fits: 2500, 3000, and 4000 Series
- Includes: Top Deck
- Bolt on Ladder
- Push Bar
- Jack Mount
- Ctech Drawers
- Driver and Passenger Side Cabinets
- Adjustable Shelves
- Rear Fenders and Skirts
- Custom Name Plate
- Wheel Covers & Brackets

HRP6932
 48" Tall Cabinet - Single 30" & 20" Double Drawer Stack
 Complete Conversion Ready To Install
 \$9,300.00

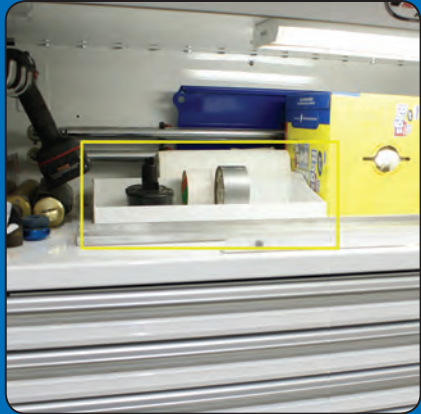
HRP MULE CONVERSIONS & ACCESSORIES



HRP Mule Conversions 48" Tall

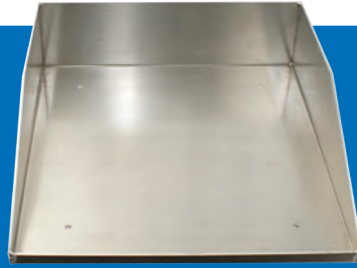
- Fits: 2500, 3000, and 4000 Series
- Includes: Top Deck
- Bolt on Ladder
- Push Bar
- Jack Mount
- Ctech Drawers
- Driver and Passenger Side Cabinets
- Adjustable Shelves
- Rear Fenders and Skirts
- Custom Name Plate
- Wheel Covers & Brackets
- Double Folding Rear Doors

HRP6933
 48" Tall Cabinet - 30" & 20" Double Drawer Stack
 Complete Conversion Ready To Install
 \$9,800.00



HRP6963
 Battery Pack Tray
 Multi Purpose Aluminum Tray Is Great For Cordless Tool Battery Packs, Parts, Tools And More. 8" X 16"
 \$25.00

* 1 Included With Conversion



HRP6962
 Scott Towel Box Tray, Aluminum.
 9 3/4" X 10 3/4", Fits Scott Brand Rags In A Box (HRP6192 - sold separate)
 \$25.00

* 1 Included With Conversion

Side Compartment

- Shock Racks
- 5 and 7 Position
- Left or Right Configurations
- Must be Ordered with Conversion
- Not Configured for HRP6933 Conversion



HRP6926-5
 Side Compartment Shock Rack
 5 Shocks
 \$300.00

HRP6926-7
 Side Compartment Shock Rack
 7 Shocks
 \$325.00

Aerosol Trays

Passenger / Driver Side Shelf Kits



14 1/4" Wide Tray



17 1/4" Wide Tray



HRP6964-250-14	2 1/2" x 14 1/4"	\$25.00
HRP6964-300-14	3" x 14 1/4"	\$25.00
HRP6964-350-14	3 1/2" x 14 1/4"	\$25.00
HRP6964-400-14	4" x 14 1/4"	\$25.00
HRP6964-250-17	2 1/2" x 17 1/4"	\$25.00
HRP6964-300-17	3" x 17 1/4"	\$25.00
HRP6964-350-17	3 1/2" x 17 1/4"	\$25.00
HRP6964-400-17	4" x 17 1/4"	\$25.00

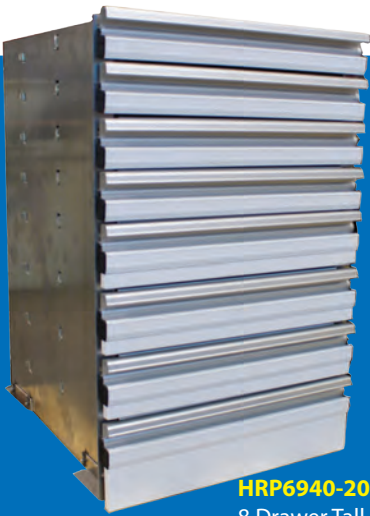
* 4 Trays Of Your Choice Included With Conversion

SEE PAGE 11 FOR SHOCK RACK OPTIONS

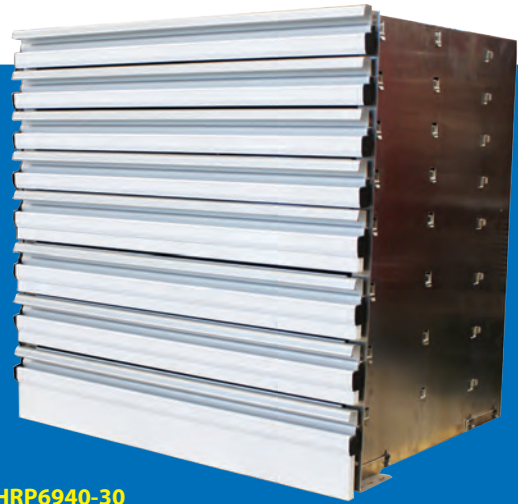




C-Tech Drawers



HRP6940-20
8 Drawer Tall Stack - 20" Wide
\$1,200.00



HRP6940-30
8 Drawer Tall Stack - 30" Wide
\$1,650.00

- Standard Drawer Stack Used In HRP Mule Conversions
- Available in White, Black or Red
- Custom Colors and Sizes
- Custom Mount Rail For HRP Conversions

* Included with Conversion

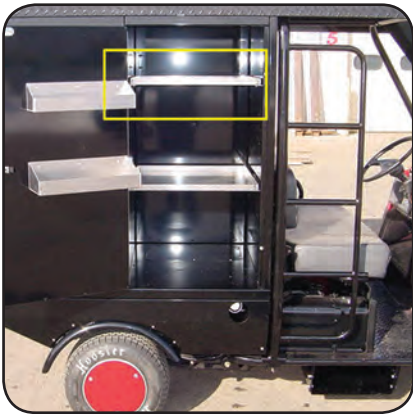


HRP6960
C-Tech Mount Rail
2 Required Per Drawer
\$14.50

Adjustable Shelves

Passenger / Driver Side Shelf Kits

- Adjustable Shelves Easily Move to Desired Position
- Add or Remove Shelves to Accommodate Items
- * 2 Sets Included with Conversion
- (1 Drivers Side Channel/2 Shelves to Fit)
- (1 Passenger Side Channel/2 Shelves to Fit)



Mounting Channel

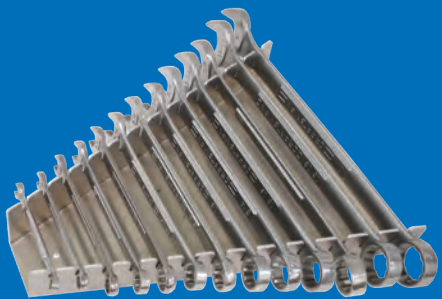


Shelves and Brackets

Part#	Description	Used On	
HRP6954-C	Driver Side Shelf Channel	HRP6931/HRP6933	\$75.00
HRP6954-S	Driver Side Shelf Standard	HRP6931	\$50.00
HRP6954-S-1	Driver Side Shelf Narrow	HRP6933/Flip Door	\$50.00
HRP6955-C	Passenger Side Shelf Channel	HRP6931/HRP6933	\$50.00
HRP6955-S	Passenger Side Shelf Standard	HRP6931	\$50.00
HRP6955-S-1	Passenger Side Shelf Narrow	HRP6933/Flip Door	\$50.00
HRP6956-S	Passenger Side Shelf T Bar Rack	HRP6931	\$50.00
HRP6956-S-1	Passenger Side Shelf T Bar Rack	HRP6933/Flip Door	\$50.00



HRP MULE CONVERSIONS & ACCESSORIES



HRP6120-F

Wrench Rack 13 Spot 1/4" thru 1" Combination Wrenches
\$16.50

HRP6121-B

Wrench Rack 9 Spot 1/4" thru 3/4" Combination Wrenches
\$16.50

HRP6121-F

Wrench Rack 9 Spot 1/4" thru 3/4" Combination Wrenches
\$16.50

HRP6122-F

Wrench Rack 8 Spot 5/16" thru 3/4" Open End / Ratchet Box End Wrenches
\$16.50

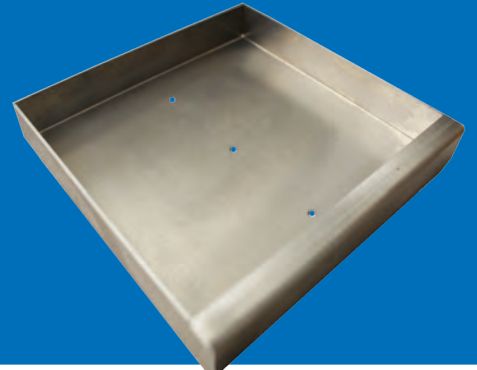
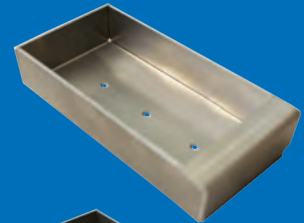
HRP6123-B

Wrench Rack 4 Spot Open End / Ratchet Box End Wrenches
\$16.50



Keep those tool box drawers in your Mule organized and ready for the crew. Our drawer trays/dividers are perfect for pliers, screw drivers, cutters, specialty tools, parts and more! We have a large selection of sizes available for any box and application. These bare finish trays are up to the task and were purposely designed for use with our Mule conversions.

- | | | |
|-----------------|------------|--------|
| HRP6152A | 2" X 4" | \$5.00 |
| HRP6152B | 2" X 6" | \$5.50 |
| HRP6152C | 2" X 8" | \$6.00 |
| HRP6152D | 2" X 10" | \$6.50 |
| HRP6152E | 2" X 12" | \$7.00 |
| | | |
| HRP6153A | 2.5" X 4" | \$5.00 |
| HRP6153B | 2.5" X 6" | \$5.50 |
| HRP6153C | 2.5" X 8" | \$6.00 |
| HRP6153D | 2.5" X 10" | \$6.50 |
| HRP6153E | 2.5" X 12" | \$7.00 |
| | | |
| HRP6154A | 3" X 4" | \$5.00 |
| HRP6154B | 3" X 6" | \$5.50 |
| HRP6154C | 3" X 8" | \$6.00 |
| HRP6154D | 3" X 10" | \$6.50 |
| HRP6154E | 3" X 12" | \$7.00 |
| | | |
| HRP6155A | 3.5" X 4" | \$5.00 |
| HRP6155B | 3.5" X 6" | \$5.50 |
| HRP6155C | 3.5" X 8" | \$6.00 |
| HRP6155D | 3.5" X 10" | \$6.50 |
| HRP6155E | 3.5" X 12" | \$7.00 |
| | | |
| HRP6156A | 4" X 4" | \$5.00 |
| HRP6156B | 4" X 6" | \$5.50 |
| HRP6156C | 4" X 8" | \$6.00 |
| HRP6156D | 4" X 10" | \$6.50 |
| HRP6156E | 4" X 12" | \$7.00 |
| | | |
| HRP6157B | 6" X 6" | \$6.00 |





Drawer Slide Tray

- Aluminum Construction
- Fits Standard 20" and 30" Drawers
- Plastic Glide Rail
- Added Drawer Organization

HRP6910-20
20" Drawer Slide Tray
\$50.00

HRP6910-3
30" Drawer Slide Tray
\$50.00

CUSTOM DRAWER ORGANIZERS

- Tool Trays
- Socket and Ratchet Trays

Call For Specs, Pricing & Options



CORDLESS DRILL / IMPACT HOLDER



- HRP6395**
Bare Aluminum Finish
\$14.00
- HRP6395-WHT**
White Powder Coat Finish
\$16.00
- HRP6395-BLK**
Black Powder Coat Finish
\$16.00

CORDLESS DRILL HOLDER



Mount Horizontal
Or Vertical

Great Holder/Cradle For Cordless Drills/
Screw Drivers. Top Opening Is 2 1/2"
Wide To Fit Most Popular Sized Cordless
Drills. Opening On Bottom Makes It Pos-
sible To Keep Bits Attached To Drill For
Quick Use And Safe Transport. Mounts
Horizontal Or Vertical.

- HRP6396**
Adjustable Mounts 2.12" to 2.92" I.D.
Bare Aluminum Finish
\$28.00
- HRP6396-WHT**
Adjustable Mounts 2.12" to 2.92" I.D.
White Powder Coat Finish
\$36.00
- HRP6396-1**
Standard 2.57" I.D. Mount
Bare Aluminum Finish
\$20.00
- HRP6396-1-WHT**
Standard 2.57" I.D. Mount
White Powder Coat Finish
\$24.00

NITRO BOTTLE HOLDER



HRP6059
Nitro Bottle Holder 7"
Set In Style
Bare Aluminum Finish
\$48.00

FUEL FUNNEL HOOK



HRP6262
Bare Aluminum Finish
\$15.00

HRP6262-WHT
White Powder Coat Finish
\$19.00

HRP6262
Black Powder Coat Finish
\$19.00

TAPE MEASURE RACKS



HRP6161A
Medium Tape Measure Rack
Mounts To Tool Box Drawer
Bare Aluminum
\$6.00

HRP6161B
Large Tape Measure Rack
Mounts To Tool Box Drawer
Bare Aluminum
\$6.00



HRP6160
Tire Tape Rack (tape sold separate)
Mounts To Tool Box Drawer
\$6.00

FUEL ACCESSORIES



BEH-366-55001406
Fuel Funnel / Triangle
\$15.95



BEH-366-5000001
Fuel Funnel Filter
Use With BEH-366-5500106 Funnel
\$21.95



HRP6363
2.5 Gallon Fuel Jug / Clear
\$26.00

HRP6364
5 Gallon Fuel Jug / Clear
\$26.00



Carpeted Cabinet Sides

- 3/4" Plywood Construction
- Carpeted Finish
- Mount Anything by Using Sheet Metal Screws

HRP6911
 Carpeted Cabinet Sides
 \$30.00 Each



Clamp Rings

- Anodized Aluminum Clamp Ring
- Ring to Fit Various Mule Models and Polaris

HRP6998-600
 Clamp Ring 600 Series Mules
 \$30.00 Each

HRP6998
 Clamp Ring 2500/3500/4000 Series Mules
 \$24.00 Each

HRP6999
 Clamp Ring Polaris Ranger
 \$30.00 Each



Mule Axle Racks

- Powder Coated Black
- Anodized Black Clamp Rings
- Rubber Edging Where Axle Sits
- Adjustable Positioning
- Includes Clamp Rings
- Removable

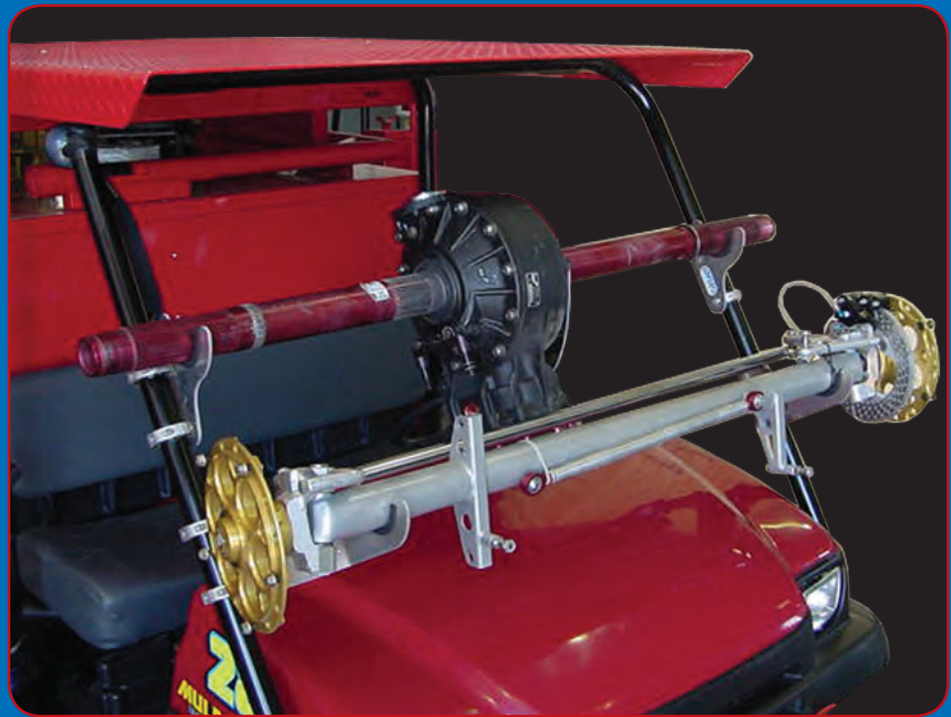
HRP6996
 Axle Rack Front
 \$68.00



HRP6997
 Axle Rack - Combo Rack
 \$118.00



HRP6995
 Axle Rack - Front
 \$88.00





Radius Rod Racks

- 1" to 1 1/4" Diameter
- Single or Double Row Options for Radius Rods

* 1 Set Included with Conversion



HRP6523S-15

15" Wide Wall Mount Radius Rod Rack. Single row, Will Hold 6 Rods, Bare Aluminum Finish. Use In Conjunction With One Of The Following: HRP6523S-15A, B or C (sold separately) \$55.00

HRP6521D-15

15" Wide Wall Mount Radius Rod Rack Double Row, Will Hold 12 Rods, Bare Aluminum finish. Use In Conjunction With One Of The Following: HRP6521D-A, B or C (sold separately) \$70.00

Bottom Trays And Upper Mounts Sold Separately. For The Complete Lineup Of HRP Radius Rod Holders And Trays, Visit Us Online At: hrpracing.com

Shock Racks

- 6 or 8 Position Wide
- Single Or Double Row Options Saddle

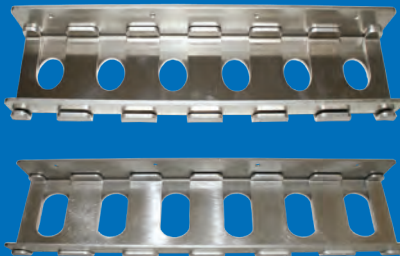


HRP6524S-15

Wall Mount Shock Rack 6 Position Single row, bare aluminum finish \$55.00

HRP6522D-15

Wall Mount Shock Rack 12 Position Double row, bare aluminum finish \$70.00



HRP6523S-15A

Radius Rod Rack Single Row Lower Tray. For 1" Diameter Rods \$26.00

HRP6523S-15B

Radius Rod Rack Single Row Lower Tray. For 1 1/8" Diameter Rods \$26.00

HRP6523S-15C

Radius Rod Rack Single Row Lower Tray. For 1 1/4" Diameter Rods \$26.00

HRP6521D-15A

Radius Rod Rack Double Row Lower Tray. For 1" Diameter Rods \$26.00

HRP6521D-15B

Radius Rod Rack Double Row Lower Tray. For 1 1/8" Diameter Rods \$26.00

HRP6521D-15C

Radius Rod Rack Double Row Lower Tray. For 1 1/4" Diameter Rods \$26.00



HRP6524S-20

Wall Mount Shock Rack 8 Position Single row, bare aluminum finish \$65.00

HRP6522D-20

Wall Mount Shock Rack 16 Position Double row, bare aluminum finish \$80.00

Sold Each. Purchase A Pair To Secure Both The Top And Bottom Of Your Shocks.

HRP MULE CONVERSIONS & ACCESSORIES

RADIUS ROD & SHOCK RACK STUDS



HRP6525
Radius Rod Rack Stud (Double)
\$12.50



HRP6526
Shock Rack Stud (Double)
\$12.50



HRP6527
Radius Rod Rack Stud (Single)
\$9.00



HRP6526
Shock Rack Stud (Single)
\$9.00

Passenger Side Torsion Bar Rack



HRP6959
15 Spot Torsion Bar Rack Will Fit Up To 30" Bars
\$350.00



Wheel Wrench Rack

- Fits Most Wheel Wrenches
- Includes Lower Wrench Saddle

HRP6971
Wheel Wrench - Lay Down Style
\$165.00

HRP6971-101
Wheel Wrench - Hanging Style
\$120.00

Battery Cover

- Powder Coated White, Black, Red or Bare Aluminum Finish
- * Included with Conversion 2500/3000 Series

HRP6970
Battery Cover
\$55.00



Battery Upgrade

- Large Battery

HRP6948
Battery Upgrade
\$90.00 Each



Painted Hoods

- Painted White, Black, or Red
- Custom Colors Available
- Rubber Coated Black Hood



HRP6989

Painted Hood - 3000 Series Color or Rubberized
\$400.00

HRP6989-4000

Painted Hood - 4000 Series Color or Rubberized
\$500.00



Fuel Jug Holders

- Painted White, Black, Red or Bare Finish
- Holder same Between 2500 & 3000 Series

HRP6982

Fuel Jug Mount Bracket 2500 Series
Weld On Thread Mount Holes - Bare
\$12.00 Each

HRP6980

Fuel Jug Rack - 3 Jug Holder
2500 Series or 3000 Series
\$200.00

HRP6981

Fuel Jug Rack - 4 Jug Holder
2500 Series or 3000 Series
\$225.00



Fuel Jug Holders

- Painted White, Black, Red or Bare Finish
- Custom Colors Available at Extra Charge
- Tub Same Between 2500 & 3000 Series

HRP6983

Fuel Jug Mount Bracket 3000 Series
Weld On Thread Mount Holes - Bare
\$12.00 Each

HRP6980

Fuel Jug Rack - 3 Jug Holder
2500 Series or 3000 Series
\$200.00

HRP6981

Fuel Jug Rack - 4 Jug Holder
2500 Series or 3000 Series
\$225.00

* 4000 Series Mount Brackets and Holder Not Available At This Time

Fender Skirts

- Powder Coated to Mule Specifications
- Steel and Aluminum Construction
- Bracket for Mounting
- * 1 Set Included with Conversion

HRP6968-LH
Fender - Left
\$60.00

HRP6967
Fender Skirt Brackets
\$15.00

HRP6968-RH
Fender - Right
\$60.00

HRP6969-LH
Fender - Left
\$50.00

HRP6969-RH-4000
Side Skirt - Right 4000 Series
\$100.00

HRP6969-RH
Side Skirt Right, with Gas Hole
\$50.00

Mule Upper Decks

- 96" in Length
- 54.250 Wide
- Side Flanges
- 1/4" Aluminum Construction
- Powder Coated White, Black or Red
- * 1 Included with Conversion

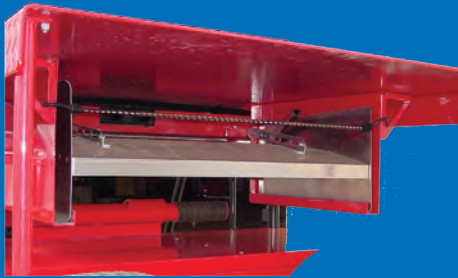
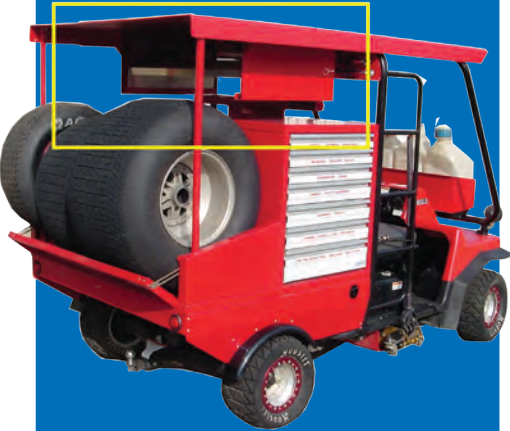
HRP6975-S
Mule Top Deck Smooth
\$700.00

HRP6975-D
Mule Top Deck - Diamond Plate
\$700.00

HRP6976 (not shown)
Mule Top Deck - Smooth 3/16" Thick
With Flanges Bent Up
\$500.00

Nose Wing Mount

- Rear Hanging Style
- Tray That Wing Lays in
- Side Gussets
- Aluminum Construction
- Powder Coated White, Black , Red or Bare Finish

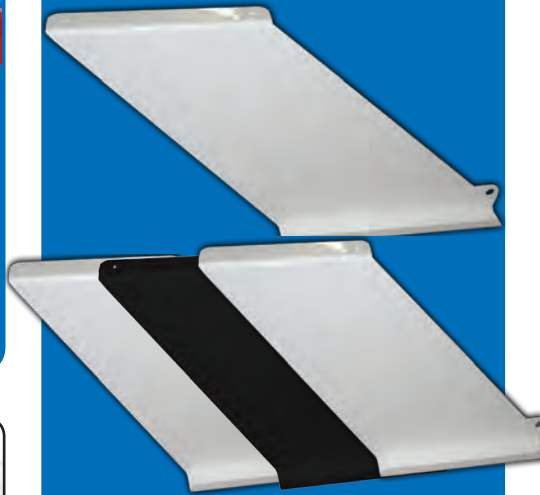


HRP6979
Nose Wing Rear Hanging
\$125.00



Nose Wing Mount

- Front Hanging Style
- Tray That Wing Lays in
- Aluminum Construction
- Powder Coat White, Black or Bare Finish
- Custom Finishes Available (Extra Charge)



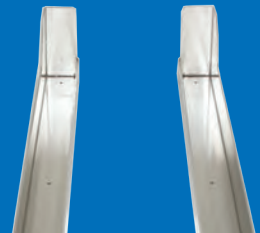
HRP6978
Nose Wing Front Mount Hanging
\$100.00

HRP6978-WHT
Nose Wing Rear Hanging
White Powder Coat Finish
\$110.00

HRP6978-BLK
Nose Wing Front Mount Hanging
Black Powder Coat Finish
\$110.00

Nose Wing Mount

- Cabinet Mount Style
- Tray That Wing Lays in
- Aluminum Construction
- Powder Coated White, Black , Red or Bare Finish



HRP6977
Nose Wing Mount Rear
\$125.00

Mule Ladder Hoop

- Ladder Hoop Keeps Jack Handle Contained
- Aluminum Clear Anodized Finish
- For Use with HRP Mule Ladder
- * 1 Included with Conversion



HRP6974-HOOP
Ladder Hoop For Jack Handle
\$30.00



Mule Ladder

- Ladder Fits 2500, 3000, 4000 Series
- Steel Construction
- Black Powder Coat Wrinkle Finish
- * 1 Included with Conversion



HRP6974-4000
Bolt On Ladder
\$275.00



Jack Hanger

- Kawasaki Mule Jack Mounts
- 3 Widths Standard Right Hand Mount
- Steel Construction
- Powder Coated Gloss Black
- Black Delrin Push Surface
- Alternate Mount Brackets for Special Application
- * 1 Included with Conversion



HRP6988-11
11" Wide 3000/4000 Series
\$110.00



HRP6988-15
15" Wide 3000/4000 Series
\$110.00



HRP6988-18
18" Wide 3000/4000 Series
\$110.00



HRP6988-L1
Mount Bracket 3000/4000 Series -Left Hand
\$25.00



HRP6988-R2
Mount Bracket 2500 Series -Right Hand
\$25.00



Mule Push Bars

- Kawasaki Mule Push Bars
- Steel Construction
- Powder Coated Gloss Black
- Black Delrin Push Surface
- Bolts to Existing Holes
- Specific Models:
600, 2500, 3000, 4000 Series
* 1 Included with Conversion



HRP6985
Push Bar 2500 Series
\$265.00



HRP6986
Push Bar 3000 Series
\$265.00



HRP6986-4000
Push Bar 4000 Series
\$265.00



HRP6986-600
Push Bar 600 Series
\$245.00



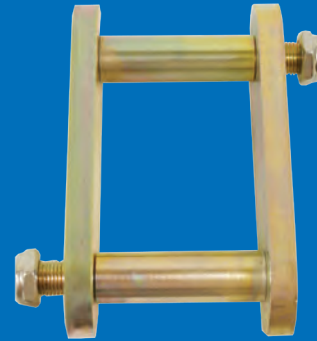


Rear Helper Spring Brackets

- Different Lengths available
- Adjust Height of Mule with Custom Lengths

HRP6990

Helper Spring / Shackle Plate Set (2 Required Per Mule)
\$45.00



Rear Helper Spring Brackets

- Mount Coil Over Springs for Added Capacity
- Purchase Your Own Shocks or Use Kits Below
- Mount Hardware included



HRP6991-TOP

Rear Helper Spring Mount (2 Required Per Mule)
\$65.00 each



HRP6991-LH

Rear Helper Spring Mount
Lower Left
\$65.00



HRP6991-RH

Rear Helper Spring Mount
Lower Right
\$65.00

Coil Over Kits (Brackets not Included)



HRP6961-ALUM

Aluminum Coil Over Kit
\$600.00



HRP6961-STEEL

Steel Coil Over Kit
\$450.00



Mule Wheel Covers

- Aluminum Construction
- All Covers and Brackets Sold Separately
- Brackets Include Springs and Buttons
- * 1 Set Included with Conversion



HRP6992	Wheel Cover Brackets 2500, 3000, 4000 Series	\$70.00
HRP6992-600	Wheel Cover Brackets 600 Series	\$70.00
HRP6993	Wheel Cover Red Sanders Style	\$40.00
HRP6994	Wheel Cover Yellow Weld Style	\$40.00
HRP6994-BARE	Wheel Cover Bare Finish	\$34.00
HRP6994-WHT	Wheel Cover All White	\$34.00
HRP6994-BLK	Wheel Cover All Black	\$34.00



Mule Wheels and Tires

- Low Profile Tires for Conversions
- Replacement Tires, Rims, & Tubes
- Tires Sold Each (*rims not included*)



HRP6945
Tire Tube
\$22.50



HRP6946
Genuine Kawasaki Rim
\$90.00



HRP6944
Hoosier Tire
\$112.50



HRP6947-GP
Turf Tire - Golf Pro
\$105.00



HRP6947
Turf Tire Carlisle
\$120.00

Headache Tie Rod Rack

- Holds pair of Tie Rods
- 4 Holders Included
- Powder Coated White, Black, Red, or Bare Finish
- * Included with Conversion HRP69xx

HRP6972
Tie Rod Rack - Head Rack
\$165.00



Rear View Mirror

- Clamps onto Cage

HRP6935
Rear View Mirror
\$36.00



Plastic Tie Rod Holder

- Holds almost anything, Several Uses For Parts & Tools
- * 4 Included with Conversion

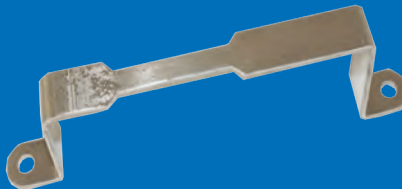
HRP6937
Plastic Tie Rod Holder
\$8.00



Battery Strap

- For Large Battery

HRP6938
Battery Strap
\$15.00



Gas Shock w/Ends

- Rear Door Prop
- * 2 Included with Conversion

HRP6966-30
Gas Shock w/ Ends
\$25.00

HRP6966-70
Gas Shock w/ Ends - Double Rear Door
\$25.00



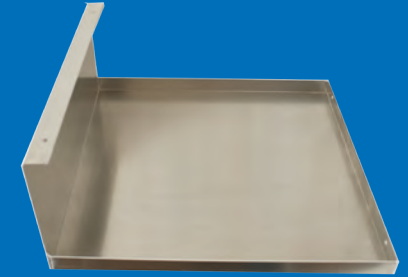


120 Volt Gen/Air Kit

- Provides Power for Air Compressor
- Provides Power for Battery Chargers and Lights

- Includes:
- Cox 35' Hose Reel
 - 14 Ga 50' Electrical Cord Reel
 - Air Compressor
 - Honda EB3000 Gas Generator
 - 120 Volt Mule Conversion Wiring
 - Shore/Gen Power Switch
 - Alternate Generator Exhaust Regulator

HRP6950
120 Volt Gen/Air Kit
\$3,800.00



HRP6955-UT
Upper Tray - Generator Cabinet
\$75.00



HRP6953
Generator Shelf Mount Tray
HRP6931 Conversion
\$75.00

HRP6953-1
Generator Shelf Mount Tray
HRP6933 Conversion
\$75.00



12 Volt Light Kit

- Includes:
- (1) 15" 12 volt Florescent
 - (2) 12 volt Incandescent
 - Cabinets fully Lighted
 - 12 volt fused Switched

HRP6951
12 Volt Light Kit
\$280.00

Lights and Grommets

- 2" Diameter Lights
- Replacement Lights and Pigtails
- * Included with Conversion



HRP6924G
Grommet with Wiring Pigtail
\$10.00

HRP6924-R
Red Light
\$10.00

Custom Name Plates

- Included with Mule Conversion
- Painted to Match Mule Conversion
- Designed to Your Specs
- * Included with Conversion



HRP6952

Custom Name Plate
\$125.00

HRP6952-P

Name Plate Plastic
\$25.00

Mule Trailers

- Dump Box
- Hitch included
- Sold Complete with or without Dump Box



HRP6928-B

Trailer with Dump Style Box
\$700.00

HRP6928-N

Trailer without Box
\$500.00





TO SHOP & ORDER ALL OF OUR PRODUCTS AND TO FIND A DEALER NEAR YOU VISIT US ONLINE hrpracing.com

ORDER BY PHONE

Our sales team is ready to take your order and provide any assistance you may require.

262.457.5015

Monday - Friday
8:00am-5:00pm

ORDER BY FAX

Please be sure to include your contact information so we are able to reach you regarding any changes and any arrangements necessary for payment.

262.670.9400

24hrs - 7days

CREDIT CARD PAYMENTS

We accept Visa, MasterCard & Discover

HRP ships UPS daily from our facility - by request - also available for pickup

HEPFNER RACING PRODUCTS

2133 Constitution Ave.
Hartford, WI 53027

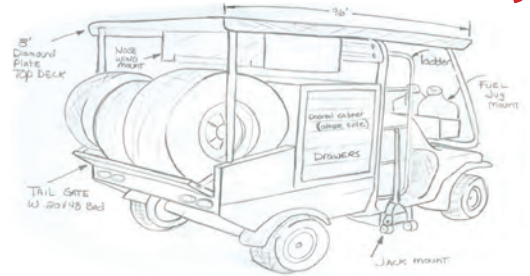
CONTACT US VIA EMAIL

hrpsales@ghilaser.com

Some items shown in photos for illustration purposes only and are not included.

Prices and styles subject to change without notice.

Customize Yours Today!



NOTES:

